

STATE OF MICHIGAN
DEPARTMENT
OF
NATURAL RESOURCES
LAND CORNER RECORD

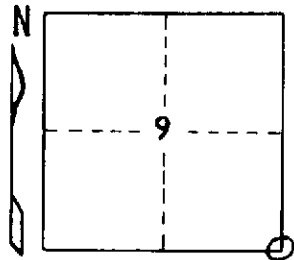
Iron COUNTY
T 45 N R 31 W

DESCRIPTION OF CORNER Section Corner 9, 10, 15, and 16

CORNER MONUMENT 1" I.D. x 36" iron pipe with 4" aluminum cap

DATE MONUMENT PLACED AND WITNESSED October 2, 1970

WITNESSES TO CORNER..... W. Pine 8 N52°E (magnetic) 17.2 ft. "S10, NBT"



W. Pine 12 S25°W (magnetic) 27.4 ft. "S15, NBT"

W. Spruce 8 S30°E (magnetic) 4.6 ft. "S16, NBT"

AND

CIRCLE CORNER REGISTERED

DESCRIPTION IN DETAIL AS TO HOW CORNER WAS LOCATED AND IDENTIFIED OR RESTORED.

Monument placed from one original bearing tree, identified from scraps of bark overgrowth and face slabs with traces of scribe marks. Tree down and otherwise in very poor condition. Corner lies on side of west-facing slope of a high ridge, as described in original field notes.

SURVEYOR'S SEAL

DISTRIBUTION:

SIGNED

Arthur P. Enger
REGISTERED LAND SURVEYOR

DATE

August 30, 1971

County Courthouse
Area Forester (Regions I & II)
District or Region Surveyor
Forestry Div., Lansing

R 4047
Rev. 10/68