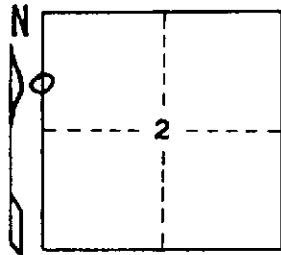


STATE OF MICHIGAN
DEPARTMENT
OF
NATURAL RESOURCES

LAND CORNER RECORD

Iron COUNTY
T 45N R 31 W

DESCRIPTION OF CORNER North 1/16 corner between Section 2 and 3
CORNER MONUMENT 1" I. D. x 36" iron pipe with 4" aluminum cap
DATE MONUMENT PLACED AND WITNESSED November 30, 1970
WITNESSES TO CORNER..... Balsam 5 N31°W (magnetic) 15.6 feet "1/16S, BT"



Balm of Gilead 10 N40½°E (magnetic) 43.1 feet "1/16S, BT"

AND

CIRCLE CORNER REGISTERED

DESCRIPTION IN DETAIL AS TO HOW CORNER WAS LOCATED AND IDENTIFIED OR RESTORED.

No evidence that the corner has been previously established.

Monument placed proportionately on line between 1/4 corner 20.04
ch. south and section corner 20.935 ch. north.

Variation at this corner about 4°30' West.

SURVEYOR'S SEAL

SIGNED

Arthur P. Enger
REGISTERED LAND SURVEYOR

DATE July 30, 1971

DISTRIBUTION:

County Courthouse
Area Forester (Regions I & II)
District or Region Surveyor
Forestry Div., Lansing

R 4047
Rev. 10/68