

STATE OF MICHIGAN
DEPARTMENT
OF
NATURAL RESOURCES

LAND CORNER RECORD

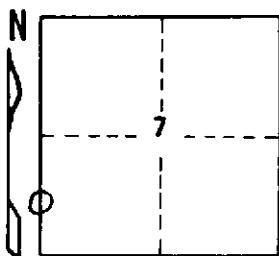
Iron COUNTY
T 45 N R 31-32 W

DESCRIPTION OF CORNER South 1/16 corner between Sections 7 and 12

CORNER MONUMENT 1" I.D. x 36" iron pipe with 4" aluminum cap

DATE MONUMENT PLACED AND WITNESSED March 13, 1970

WITNESSES TO CORNER..... Sugar Maple 16 N41 $\frac{1}{2}$ ^oW (magnetic) 37.1 feet "1/16S, BT"



White Spruce 6 N1/2^oW (magnetic) 27.1 feet "1/16S, BT"

AND

CIRCLE CORNER REGISTERED

DESCRIPTION IN DETAIL AS TO HOW CORNER WAS LOCATED AND IDENTIFIED OR RESTORED.

No evidence that the corner has been previously established.

Monument placed on line between section corner 20.008 ch. south and
1/4 corner 20.008 ch. north.

Variation at this corner about 2^o00' west.

SURVEYOR'S SEAL

SIGNED

Arthur P. Enger
REGISTERED LAND SURVEYOR

DATE

August 19, 1971

DISTRIBUTION:

County Courthouse
Area Forester (Regions I & II)
District or Region Surveyor
Forestry Div., Lansing

R 4047
Rev. 10/68