

STATE OF MICHIGAN
DEPARTMENT
OF
NATURAL RESOURCES

LAND CORNER RECORD

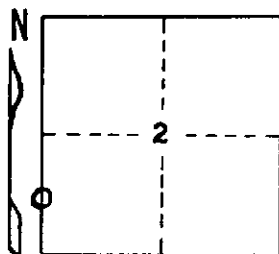
Iron COUNTY
T 45 N R 31 W

DESCRIPTION OF CORNER South 1/16 corner between Sections 2 and 3

CORNER MONUMENT 1" I. D. x 36" iron pipe with 4" aluminum cap

DATE MONUMENT PLACED AND WITNESSED June 16, 1970

WITNESSES TO CORNER..... Balsam 10 N33 $\frac{1}{2}$ °W (magnetic) 7.7 feet "1/16S, BT"



W. Spruce 10 S4 $\frac{1}{2}$ °E (magnetic) 29.1 feet "1/16S, BT"

AND

CIRCLE CORNER REGISTERED

DESCRIPTION IN DETAIL AS TO HOW CORNER WAS LOCATED AND IDENTIFIED OR RESTORED.

No evidence that the corner had been previously established.

Monument placed proportionately on line between section corner 20.04 ch. south and 1/4 corner 20.04 chains north.

SURVEYOR'S SEAL

DISTRIBUTION:

SIGNED

Arthur P. Enger
REGISTERED LAND SURVEYOR

DATE

July 27, 1971

County Courthouse
Area Forester (Regions I & II)
District or Region Surveyor
Forestry Div., Lansing

R 4047
Rev. 10/68