

STATE OF MICHIGAN
DEPARTMENT
OF
NATURAL RESOURCES

LAND CORNER RECORD

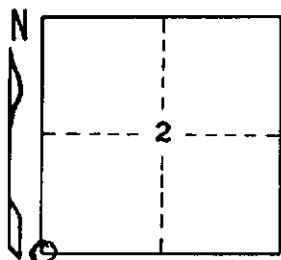
Iron COUNTY
T 45 N R 31 W

DESCRIPTION OF CORNER Section Corner 2, 3, 10, and 11

CORNER MONUMENT 1" I. D. x 36" iron pipe with 4" aluminum cap

DATE MONUMENT PLACED AND WITNESSED June 4, 1970

WITNESSES TO CORNER..... B. Spruce 6 S57 $\frac{1}{2}$ $^{\circ}$ E (magnetic) 22.8 ft. "S11, NBT"



Tamarack 7 N75 $^{\circ}$ W (magnetic) 5.5 ft. "S3, NBT"

Tamarack 6 N1 $^{\circ}$ E (magnetic) 10.1 ft. "S2, NBT"

AND

CIRCLE CORNER REGISTERED

DESCRIPTION IN DETAIL AS TO HOW CORNER WAS LOCATED AND IDENTIFIED OR RESTORED.

Found a squared wood post probably placed in 1954 bearing N78 $\frac{1}{2}$ $^{\circ}$ W 2.38 ch. from corner, for approximate corner. No evidence to support it.

Monument placed by double proportionate measurement from corners 1 mile N, 2 miles S, 2 miles E, and 1 mile W. Corner falls on east edge of a small spruce swamp, in a place where original tamarack BT's would likely have been growing. Distances to ridges reported in original notes to be 6.81 ch. and 8.81 ch. E and 2.89 ch. N check within a few links.

SURVEYOR'S SEAL

SIGNED

Arthur O. Enger
REGISTERED LAND SURVEYOR

DATE

July 26, 1971

DISTRIBUTION:

County Courthouse
Area Forester (Regions I & II)
District or Region Surveyor
Forestry Div., Lansing

R 4047
Rev. 10/68