

STATE OF MICHIGAN  
DEPARTMENT  
OF  
NATURAL RESOURCES

LAND CORNER RECORD

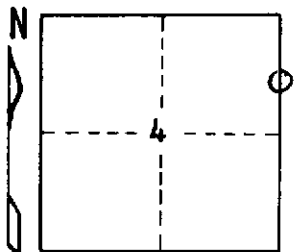
Iron COUNTY  
T 45 N R 31 W

DESCRIPTION OF CORNER North 1/16 corner between Sections 3 and 4

CORNER MONUMENT 1" I.D. x 36" iron pipe with 4" aluminum cap.

DATE MONUMENT PLACED AND WITNESSED September 11, 1970

WITNESSES TO CORNER..... Tamarack 6 S13 $\frac{1}{2}$ <sup>0</sup>W (magnetic) 27.3 ft. "1/16S, BT"



Tamarack 9 N48<sup>0</sup>E (magnetic) 61.9 ft. "1/16S, BT"

AND

CIRCLE CORNER REGISTERED

DESCRIPTION IN DETAIL AS TO HOW CORNER WAS LOCATED AND IDENTIFIED OR RESTORED.

No evidence that the corner had been previously established.

Monument placed proportionately on line between 1/4 corner 19.988 ch. south and section corner 20.497 ch. north. Erratic N & S single-wire fence line is .22 ch. west.

SURVEYOR'S SEAL

DISTRIBUTION:

SIGNED

Arthur P. Enger  
REGISTERED LAND SURVEYOR

DATE

July 20, 1971

County Courthouse  
Area Forester (Regions I & II)  
District or Region Surveyor  
Forestry Div., Lansing

R 4047  
Rev. 10/68