

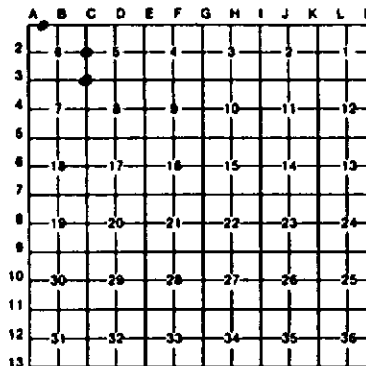
LAND CORNER RECORDATION CERTIFICATE
Filing Requirement of Act 74, Mich. P.A. 1970

For corners in
Iron

(County)	Located In:	Corner Code #
1. Public Land Survey	T 45N R31W	C3
	T 45N R31W	C2
	T R	
	T R	
2. Property Controlling In Section	S 6 T 45N R31W	1
	S T R	
3. Miscellaneous Property in Sec.	S T R	
	S T R	

Register of Deeds Stamp & File Number

4. Lot No. _____, Recorded Plat _____
5. Private Claims _____



I, Stephan J. Szyszkoski, in a field survey on April 27, 1993, 19____, do hereby certify that under requirements of P.A. 74, Michigan P.A. of 1970, the corner points mentioned in lines 1 and 2 above were in conformance with regulations and rules therefore as required in the current manual of survey instructions of the United States Department of the Interior, Bureau of Land Management or by a decree of a Court of Law and/or that the corner points mentioned in lines 3, 4 and 5 above were in conformance with the rules of the Michigan Board of Land Surveyors or by a Decree of a Court of Law; established, re-established, monumented, re-monumented, recovered, found as expressed below:

NOTE: Not more than 4 corners, all in the same town and range, may be recorded on this certificate.

A. Description of original monument and accessories and/or subsequent restoration:

(C3) Corner common to Sections 5-6-7-8. Original corner established in 1849 by U.S. Deputy Surveyor John Burt. Original BTs: Y. Birch 20 N57E 53, Sugar 12 S85W 3. in 1935, B.G. Buell, Patten Lumber Co. (now Ned Lake Timber and Land Co.) notes "possible stump" for Y. Birch 0BT. "No trace" of sugar 0BT. Buell set post for corner.

(C2) Quarter corner common to Sections 5-6. Original corner established in 1849 by U.S. Deputy Surveyor John Burt. Original BTs: Y. Birch 14 N32E 58, Sugar 14 S25W 25. in 1935, B.G. Buell of Patten Timber Co. (now Ned Lake Timber and Land Co.) notes: "Set post, Y. Birch N32E 58 - 20' tree?". Found no subsequent record.

(1-Sec. 6) West 1/16 corner between Section 6 T45N-R31W and Section 31 T46N-R31W. Corner not established in the original survey. Found no subsequent record.

B. Description of corner evidence found and/or method applied in restoring or reestablishing corner:

(C3) Original post and accessories not recovered. Found and accepted the remains of Buell's wood post, a punky bottom, in a well-defined hole, amidst such plastic flagging of different colors and age. Verified the position of the corner with reference to the original record: East 4.23 ch. Brook 5L C. SE checks very well; Original corner West 80.14 ch. found to be 80.27 ch.; reestablished corner north 79.75 ch. found to be 79.81 ch.; original corner south 240 ch. found to be 240.04 ch. At the position of the post, I placed a 1"x36" iron pipe capped with a 4" dia. cast aluminum MDNR tablet, appropriately stamped.

(C2) Original post and accessories not recovered. Buell's post not recovered. Found no acceptable evidence of the position of the original corner. Reestablished the corner on a straight line between Section corner 2642.03' south and section corner 2625.51' north, being the proportionate position. At the position for the corner, I placed a 1"x36" iron pipe capped with a 4" dia. cast aluminum MDNR tablet, appropriately stamped.

(1-Sec. 6) Found no evidence of prior monumentation at the corner location. Established the corner on a straight line between 1/4 corner 1319.40' east and township corner 1335.90' west, being 20 chains proportionate measure west of the 1/4 corner. At the position for the corner, I placed a 1"x36" iron pipe capped with a 4" dia. cast aluminum MDNR tablet, appropriately stamped.

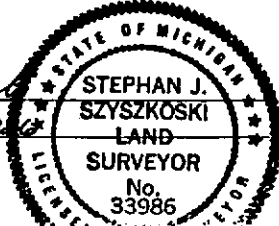
C. Description of monument for corner and accessories established to perpetuate locating the position of the corner:

(C3) Set 1" pipe with 4" aluminum cap. Blazed and scribed the following new bearing trees (bearings magnetic):
6" Cherry N57E 9.7' "S5 NBT"
6" Maple N57E 25.2' "S5 NBT"
7" Maple N56N 24.9' "S6 NBT"
6" Spruce N02W 25.2' "S6 NBT"
placed a 4" squared spruce post 1 ft. NE.

(C2) Set 1" pipe with 4" aluminum cap. Blazed and scribed the following new bearing trees (bearings magnetic):
13" Cherry S47W 16.8' "1/4S NBT"
7" Sugar S01E 4.7' "1/4S NBT"
6" Sugar N07E 30.2' "1/4S NBT"
10" Sugar N04N 19.3' "1/4S NBT"
a tack in the top of a 30" high stump bears N15W, 10.58' from the corner.

(1-Sec. 6) Set 1" pipe with 4" cap. Blazed and scribed the following bearing trees (bearings magnetic):
14" Balsam S37E 32.0' "1/16S BT"
4" spruce South 40.4' "1/16S BT"
7" balsam S26W 22.6' "1/16S BT"
13" balsam S55W 31.3' "1/16S BT"
Set a squared spruce post 1 ft. north of the monument. Corner falls in a clearcut, about 10' north of it's southerly edge.

Signed by Stephan J. Szyszkoski
Surveyor's Michigan License No. 33986



Date 6-28-93