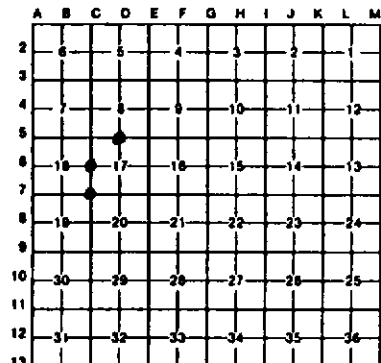


LAND CORNER RECORDATION CERTIFICATE
Filing Requirement of Act 74, Mich. P.A. 1970

For corners in Iron <small>(County)</small>	Located In:	Corner Code \neq
1. Public Land Survey	T <u>45N</u> R <u>31W</u>	<u>C7</u>
	T <u>45N</u> R <u>31W</u>	<u>C6</u>
	T <u>45N</u> R <u>31W</u>	<u>D5</u>
	T _____ R _____	_____
2. Property Controlling in Section	S _____ T _____ R _____	_____
	S _____ T _____ R _____	_____
3. Miscellaneous Property in Sec.	S _____ T _____ R _____	_____
	S _____ T _____ R _____	_____

Register of Deeds Stamp & File Number

4. Lot No. _____, Recorded Plat _____
5. Private Claims _____



I, Stephan J. Szyszkoski, in a field survey on June 09, 1993, 19____, do hereby certify that under requirements of P.A. 74, Michigan P.A. of 1970, the corner points mentioned in lines 1 and 2 above were in conformance with regulations and rules therefore as required in the current manual of survey instructions of the United States Department of the Interior, Bureau of Land Management or by a decree of a Court of Law and/or that the corner points mentioned in lines 3, 4 and 5 above were in conformance with the rules of the Michigan Board of Land Surveyors or by a Decree of a Court of Law; established, re-established, monumented, re-monumented, recovered, found as expressed below:

NOTE: Not more than 4 corners, all in the same town and range, may be recorded on this certificate.

A. Description of original monument and accessories and/or subsequent restoration:

- (C7) Corner common to Sections 17-18-19-20. Corner established in 1849 by U.S. Deputy Surveyor John Burt. Original BTs: Y. Birch 10 S9E 42, Y. Birch 15 N28W 19. Found no subsequent record.
- (C6) Quarter corner between Sections 17-18. Corner established in 1849 by U.S. Deputy Surveyor John Burt. Original BTs: Y. Birch 8 S62E 20, sugar 12 N62W 9. Found no subsequent record.
- (D5) Quarter corner common to Sections 8-17. Corner established in 1849 by U.S. Deputy Surveyor John Burt. Original BTs: Cedar 12 N15E 20, Cedar 12 S27W 14. Found no subsequent record.

B. Description of corner evidence found and/or method applied in restoring or reestablishing corner:

- (C7) Original post and accessories not recovered. Corner falls in a regenerating aspen clearcut. Found no acceptable evidence of the location of the original corner on the ground. Reestablished the corner by double proportionate measurement to the original record between corners 10561.81' north, 5280.92' south, 5272.36' east, and 2636.20' west. At the position for the corner, placed a 1"x36" iron pipe capped with a 4" dia. cast aluminum MDR tablet, appropriately stamped. The corner falls about 136' south of the north edge of the clearcut.
- (C6) Original post and accessories not recovered. Found no acceptable evidence of the position of the original corner. Reestablished the corner on a straight line between section corners 2640.46' north and south, being the proportionate position. At the position for the corner, placed a 1"x32" iron pipe capped with a 4" dia. cast aluminum MDR tablet, appropriately stamped.
- (D5) Original post and accessories not recovered. Found no acceptable evidence of the position of the original corner. The original line calls on this mile are very unreliable and it is difficult to make sense of them. Found several old Cedars in the corner area, some appear to have been pushed around by previous logging activity. Found no markings on any. Reestablished the corner on a straight line between section corners 2637.66' east and west, being the proportionate position. The corner falls on a west facing slope, about 1 chain west of the top and about 1 chain east of the toe.

C. Description of monument for corner and accessories established to perpetuate locating the position of the corner:

- | | | |
|----------------------------------------------------------------------------------------------------------------------------------------------------------------------------------------------------------------------------------------------------------------------------------------------|---------------------------------------------------------------------------------------------------------------------------------------------------------------------------------------------------------------------------------------------------------------|------------------------------------------------------------------------------------------------------------------------------------------------------------------------------------------------------------------------------------------------------------------------------------------------------------------------------|
| (C7) Set 1" pipe with 4" aluminum cap.
No witness trees available.
Placed 2 squared sugar posts adjacent to the corner as follows:
S32W 1.3' to center of 5" post
S72E 0.8' to center of 6" post.
North-south cut line is 15' west
Corner falls within East-West cut line. | (C6) Set 1" pipe with 4" aluminum cap.
Blazed and scribed the following new bearing trees (bearings magnetic):
3" Balsam N40E 14.4' "1/4S NBT"
7" Balsam S70E 19.4' "1/4S NBT"
24" Spruce S26N 30.5' "1/4S NBT"
14" Sugar N84W 6.5' "1/4S NBT" | (D5) Set 1" pipe with 4" aluminum cap.
Blazed and scribed the following new bearing trees (bearings magnetic, distances are horizontal):
5" Spruce S06W 32.2' "1/4S NBT"
6" Poplar N56E 18.0' "1/4S NBT"
5" Spruce N19W 45.2' "1/4S NBT"
7" Maple clump S13E 48.8' "1/4S NBT"
Set 4" Poplar post adjacent. |
|----------------------------------------------------------------------------------------------------------------------------------------------------------------------------------------------------------------------------------------------------------------------------------------------|---------------------------------------------------------------------------------------------------------------------------------------------------------------------------------------------------------------------------------------------------------------|------------------------------------------------------------------------------------------------------------------------------------------------------------------------------------------------------------------------------------------------------------------------------------------------------------------------------|

Signed by Stephan J. Szyszkoski
Surveyor's Michigan License No. 33980



Date 6-28-93