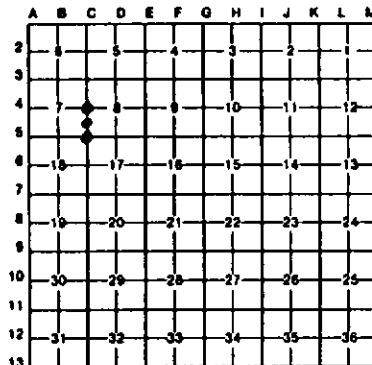


LAND CORNER RECORDATION CERTIFICATE
Filing Requirement of Act 74, Mich. P.A. 1970

For corners in Iron	Located in:	Corner Code -##
(County)		
1. Public Land Survey	T 45N R 31W	C4
	T 45N R 31W	C5
	T R	
	T R	
2. Property Controlling In Section	S 8 T 45N R 31W	10
	S T R	
3. Miscellaneous Property in Sec.	S T R	
	S T R	

Register of Deeds Stamp & File Number

4. Lot No. _____, Recorded Plat _____
 5. Private Claims _____



I, Stephan J. Szyzkoski, in a field survey on June 09, 1993, 19_____, do hereby certify that under requirements of P.A. 74, Michigan P.A. of 1970, the corner points mentioned in lines 1 and 2 above were in conformance with regulations and rules therefore as required in the current manual of survey instructions of the United States Department of the Interior, Bureau of Land Management or by a decree of a Court of Law and/or that the corner points mentioned in lines 3, 4 and 5 above were in conformance with the rules of the Michigan Board of Land Surveyors or by a Decree of a Court of Law; established, re-established, monumented, re-monumented, recovered, found as expressed below:

NOTE: Not more than 4 corners, all in the same town and range, may be recorded on this certificate.

A. Description of original monument and accessories and/or subsequent restoration:

- (C4) Quarter corner common to Sections 7-8. Original corner established in 1849 by U.S. Deputy Surveyor John Burt. Original Bfs: Sugar 8 N47E 47, Sugar 10 S20W 25. Found no subsequent record.
 (C5) Corner common to Sections 7-8-17-18. Original corner established in 1849 by U.S. Deputy Surveyor John Burt. Original Bfs: Sugar 10 N55W 25, Sugar 12 S35E 14. Found no subsequent record.
 (10-Sec. 8) South 1/16 corner between sections 7-8. Corner not established in the original survey. Found no subsequent record.

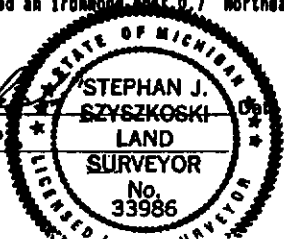
B. Description of corner evidence found and/or method applied in restoring or reestablishing corner:

- (C4) Original post and accessories not recovered. Found no acceptable evidence of the position of the original corner. Reestablished the corner on a straight line between section corners 2640.46' north and south, being the proportionate position. At the position for the corner, I placed a 1"x32" iron pipe capped with a 4" dia. cast aluminum MDMR tablet, appropriately stamped.
 (C5) Original post and accessories not recovered. Found no acceptable evidence of the position of the original corner. There are 3 very old sugars within 50 ft. of the corner, all in the NE quadrant, but none fit the record. Reestablished the corner by double proportionate measure to the original record between section corners 5280.92' north, 10561.84' south, 5270.06' west, and 5275.32' east. At the position for the corner, I placed a 1"x32" iron pipe capped with a 4" dia. cast aluminum MDMR tablet, appropriately stamped.
 (10-Sec. 8) Established the corner on a straight line between quarter corner and section corner 1320.23' north and south, being the proportionate position. At the position for the corner, I placed a 1"x32" iron pipe capped with a 4" dia. cast aluminum MDMR tablet, appropriately stamped. From the corner monumented, found an angle iron, placed by an unknown party, 102.2' south and 88.8' east. According to adjacent landowner, the angle iron has been in place for many years.

C. Description of monument for corner and accessories established to perpetuate locating the position of the corner:

- | | | |
|-------------------------------------------------------------------------------------------------------------------------------------------------------------------------------------------------------------------------------------------------------------------------------------------------------|---------------------------------------------------------------------------------------------------------------------------------------------------------------------------------------------------------------------------------------------------------------------------------------------------------------------------|-----------------------------------------------------------------------------------------------------------------------------------------------------------------------------------------------------------------------------------------------------------------------------------------------------|
| (C4) Set 1" pipe with 4" aluminum cap. Blazed and scribed the following new bearing trees (bearings magnetic):
12" Spruce N11W 38.3' 1/4S NBT
12" Spruce S87E 33.5' 1/4S NBT
14" Spruce S12E 45.8' 1/4S NBT
7" Spruce S59W 35.5' 1/4S NBT
Squared an 8" Poplar, South 5.7' | (C5) Set 1" pipe with 4" aluminum cap. Blazed and scribed the following new bearing trees (bearings magnetic, distances horizontal):
7" Sugar N67E 3.5' "S8 NBT
6" Sugar S06W 12.7' "S18 NBT
8" Sugar N66W 38.6' "S7 NBT
14" Sugar S37E 29.7' "S17 NBT
Placed an ironwood post 0.7' Northeast. | (10-Sec. 8) Set 1" pipe with 4" cap. Blazed and scribed the following bearing trees (bearings magnetic):
7" Spruce S60W 11.7' 1/16S BT
9" Spruce S34E 19.3' 1/16S BT
8" Maple N08W 37.6' 1/16S BT
7" spruce N67E 36.7' 1/6S BT
Placed a 3" squared spruce post adjacent. |
|-------------------------------------------------------------------------------------------------------------------------------------------------------------------------------------------------------------------------------------------------------------------------------------------------------|---------------------------------------------------------------------------------------------------------------------------------------------------------------------------------------------------------------------------------------------------------------------------------------------------------------------------|-----------------------------------------------------------------------------------------------------------------------------------------------------------------------------------------------------------------------------------------------------------------------------------------------------|

Signed by Stephan J. Szyzkoski
 Surveyor's Michigan License No. 33986



6-28-93