

LAND CORNER RECORDATION CERTIFICATE
Filing Requirement of Act 74, Mich. P.A. 1970 as Amended

For corners in

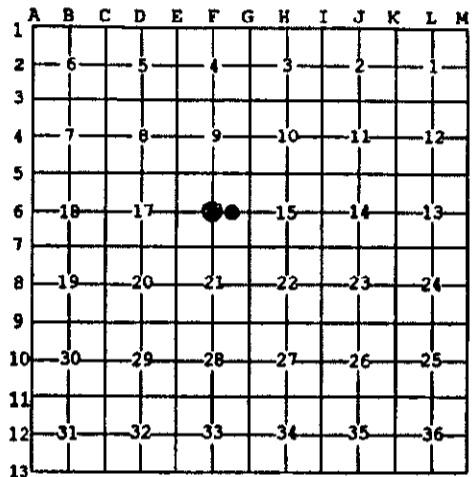
Iron	Located In:	Corner Code #
<small>(County)</small>		
1. Public Land Survey	T 45N R 34W	F6
	T R	
	T R	
2. Property Controlling	S T R	
in Section	S 16 T 45N R 34W	9
	S T R	
3. Miscellaneous	S T R	
Property in Sec.	S T R	

Register of Deeds Stamp & File Number

4. Lot No. _____, Recorded Plat _____
 5. Private Claims _____

May 03 2004

I, Stephan J. Szyszkoski, in a field survey on _____, 20____ do hereby state that under requirements of P.A. 74, Michigan P.A. of 1970, the corner points mentioned in lines 1 and 2 above were in conformance with regulations and rules therefore as required in the current manual of survey instructions of the United States Department of the Interior, Bureau of Land Management or by a decree of a Court of Law and /or that the corner points mentioned in lines 3, 4 and 5 above were in conformance with the rules of the Michigan Board of Land Surveyors or by a Decree of a Court of Law; established, re-established, monumented, recovered, found as expressed below:



NOTE: Not more than 2 corners, all in the same town and range, may be recorded on this certificate.

A. Description of original monument and accessories and/or subsequent restoration:

- (F6) Center of Section 16. Not established in the original survey.
- (9-Sec. 16) East 1/16 corner Section 16. Not established in the original survey.

B. Description of corner evidence found and/or method applied in restoring or reestablishing corner:

- (F6) Established the corner at the intersection of straight lines connecting opposite quarter corners.
- (9-Sec. 16) Established the corner midway and on a straight line between G6 1330.69' East and Center of Section 16 1330.69' West.

C. Description of monument for corner and accessories established to perpetuate locating the position of the corner:

(F6) Set 1" IDx32" I. pipe with 4" alum. MDNR cap. Blazed, scribed, and set measuring nails in: 11" Poplar North 38.90' "1/4 8T" 9" Spruce N80E 25.05' do 12" Spruce S18E 33.65' do 9" W. Birch S06W 29.65' do Bearings are magnetic. Distances are to nail with tag. Set sq'd cedar post adjacent.	(9) Set 1" IDx32" I. pipe with 4" alum. MDNR cap. Blazed, scribed, and set measuring nails in: 4" Sugar N18W 33.90' "1/16S 8T" 8" Spruce N86W 38.55' do 7" Maple S38W 10.10' do 6" Spruce S63E 43.15' do Bearings are magnetic. Distances are to nail with tag. Set sq'd cedar post adjacent.
--	--



Signed by *Stephan J. Szyszkoski*
 Surveyor's Michigan License No. 33986

Date 5/19/04

For the Michigan Department of Natural Resources, Office of Land and Facilities