

STATE OF MICHIGAN
DEPARTMENT
OF
NATURAL RESOURCES

LAND CORNER RECORD

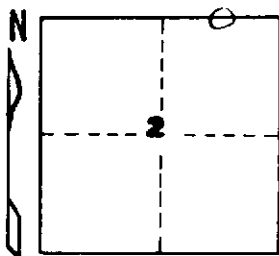
Iron COUNTY
T 45-46N R 31W

DESCRIPTION OF CORNER East 1/16 corner between Sections 2 and 35

CORNER MONUMENT 1" I.D. x 36" iron pipe with 4" aluminum cap

DATE MONUMENT PLACED AND WITNESSED June 24, 1969

WITNESSES TO CORNER..... Red Maple 4 N53°W 71½ links "1/16 S BT"



Aspen 7 N2°E 18 links "1/16 S BT"

Bearings are magnetic

AND

CIRCLE CORNER REGISTERED

DESCRIPTION IN DETAIL AS TO HOW CORNER WAS LOCATED AND IDENTIFIED OR RESTORED.

Monument placed by proportionate measurement on line between section corners 139.71 chains west and 19.96 chains east. Found no evidence that the corner had ever been established here previously.

Variation is 1°00' West at this corner.

SURVEYOR'S SEAL

SIGNED Arthur O. Enger DATE 2/19/70
REGISTERED LAND SURVEYOR

DISTRIBUTION:

County Courthouse
Area Forester (Regions I & II)
District or Region Surveyor
Forestry Div., Lansing

R 4047
Rev. 10/68