

STATE OF MICHIGAN
DEPARTMENT
OF
NATURAL RESOURCES

LAND CORNER RECORD

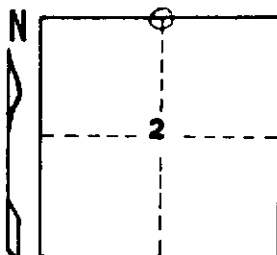
Iron COUNTY
T 45-46N R 31W

DESCRIPTION OF CORNER 1/4 corner between Sections 2 and 35

CORNER MONUMENT 1" I.D. x 36" iron pipe with 4" aluminum cap

DATE MONUMENT PLACED AND WITNESSED June 17, 1969

WITNESSES TO CORNER..... Sugar Maple 6 N34°E 14 links "1/4S NBT"



Sugar Maple 8 S37°E 38 links "1/4S NBT"

Bearings are magnetic.

AND

CIRCLE CORNER REGISTERED

DESCRIPTION IN DETAIL AS TO HOW CORNER WAS LOCATED AND IDENTIFIED OR RESTORED.

Monument placed by proportionate measurement on line between section corners 39.92 chains east and 119.75 chains west. Found no evidence of original monument or its accessories. a 9" sugar maple marked "1/4" in yellow marking paint bears N17E 1.49 chains from corner as here re-established; apparently an approximate corner.

Variation at this corner is 0°30' East.

SURVEYOR'S SEAL

DISTRIBUTION:

SIGNED

Arthur C. Enger
REGISTERED LAND SURVEYOR

DATE

2/26/70

County Courthouse
Area Forester (Regions I & II)
District or Region Surveyor
Forestry Div., Lansing

R 4047
Rev. 10/68