

STATE OF MICHIGAN  
DEPARTMENT  
OF  
NATURAL RESOURCES

LAND CORNER RECORD

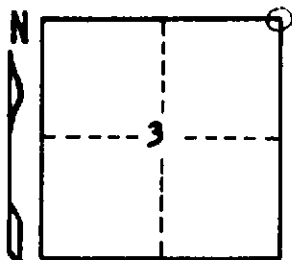
Iron COUNTY  
T 45-46N R 31W

DESCRIPTION OF CORNER Section Corner 2, 3, 34, and 35

CORNER MONUMENT 1" I.D. x 36" iron pipe with 4" aluminum cap

DATE MONUMENT PLACED AND WITNESSED June 11, 1969

WITNESSES TO CORNER..... Sugar Maple 5 N47°W 6 links "S34 NBT"



Sugar Maple 4 S36½°E 16 links "S 2 NBT"

Sugar Maple 7 N59°E 57½ links "S35 NBT"

AND  
All bearings true.

CIRCLE CORNER REGISTERED

DESCRIPTION IN DETAIL AS TO HOW CORNER WAS LOCATED AND IDENTIFIED OR RESTORED.

Monument placed by proportionate measurement on line between section corners 79, 83 chains to east and west. Found no evidence of original monument or its accessories. A picket for an approximate corner was found bearing N10° 53' W (true bearing) 1.364 chains from corner as here re-established, and a fence wire corner bears S9° W (true) 75 links. "Top of ridge 15 feet course WNW" mentioned in original field notes is 2.00 to 2.25 chains east of corner and "Ascend hill 15 feet course SE" is 1.60 chains west of corner. Original notes give both distances as 2.00 chains.

Variation, as determined from solar observation, is 9° 53' East at this corner. This is abnormal for the area.

SURVEYOR'S SEAL

SIGNED

Arthur O. Enger  
REGISTERED LAND SURVEYOR

DATE

2/26/70

DISTRIBUTION:

County Courthouse  
Area Forester (Regions I & II)  
District or Region Surveyor  
Forestry Div., Lansing

R 4047  
Rev. 10/68