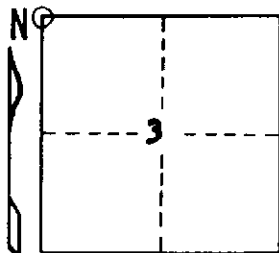


STATE OF MICHIGAN  
DEPARTMENT  
OF  
NATURAL RESOURCES

LAND CORNER RECORD

Iron COUNTY  
T 45-46N R 31W

DESCRIPTION OF CORNER Section Corner 3, 4, 33 and 34  
CORNER MONUMENT 1" I.D. x 36" iron pipe with 4" aluminum cap  
DATE MONUMENT PLACED AND WITNESSED June 6, 1969  
WITNESSES TO CORNER..... Black Spruce 8 N 9°E 48 links "S 34 NBT"



Black Spruce 6 S64°E 29 links "S 3 NBT"

Black Spruce 9 S42°W 42 links "S 4 NBT"

AND

CIRCLE CORNER REGISTERED

DESCRIPTION IN DETAIL AS TO HOW CORNER WAS LOCATED AND IDENTIFIED OR RESTORED.

Monument set basically by proportionate measurement on line between known section corners about 79.84 chains West and 159.67 chains East and then harmonized with original field note calls to a swamp edge 2.00 chains west, a stream 3.55 chains west and a ridge top 5.50 chains east. It was found that placing the corner 40 links south of the proportionate corner point on the true line between the known corners to east and west produced almost exact agreement with the original field notes. By coincidence or otherwise, this position also fell at the intersection of old blazed lines, estimated 45+ years old, to east, west, and south. Distance south to a stream crossing shows general agreement with original distance, but was not considered controlling.

Found no evidence of original corner or its accessories, but did find a squared spruce post (not old) at a fence corner S64E 49½ links and a picket and location poster purporting to be the corner bearing N20E 1.155 chains from monument placed here.

There appears to be 0°00' compass variation at this corner.

SURVEYOR'S SEAL

SIGNED Arthur O. Enger DATE 2/26/70  
REGISTERED LAND SURVEYOR

DISTRIBUTION:

County Courthouse  
Area Forester (Regions I & II)  
District or Region Surveyor  
Forestry Div., Lansing

R 4047  
Rev. 10/68