

48.

**LAND CORNER RECORDATION CERTIFICATE**  
Filing Requirement of Act 74, Mich. P.A. 1970

For corners in

Iron _____ (County)	Located In:	Corner Code #
1. Public Land Survey	T <u>46N</u> R <u>34W</u>	<u>65</u>
	T _____ R _____	_____
	T _____ R _____	_____
	T _____ R _____	_____
2. Property Controlling in Section	S <u>19</u> T <u>46N</u> R <u>34W</u>	<u>15</u>
	S _____ T _____ R _____	_____
3. Miscellaneous Property in Sec.	S _____ T _____ R _____	_____
	S _____ T _____ R _____	_____

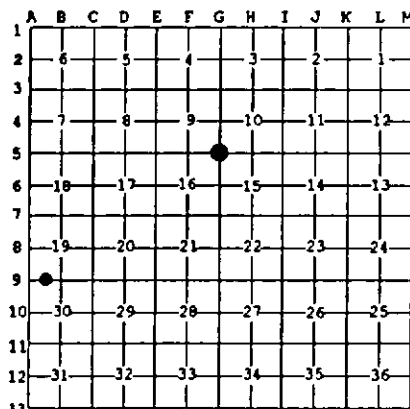
Register of Deeds Stamp & File Number

4. Lot No. \_\_\_\_\_, Recorded Plat \_\_\_\_\_  
5. Private Claims \_\_\_\_\_

15 Aug 17 1998  
65 Aug 06 1998

I, Stephan J. Szyszkoski, in a field survey on \_\_\_\_\_, 19\_\_\_\_ do hereby state that under requirements of P.A. 74, Michigan P.A. of 1970, the corner points mentioned in lines 1 and 2 above were in conformance with regulations and rules therefore as required in the current manual of survey instructions of the United States Department of the Interior, Bureau of Land Management or by a decree of a Court of Law and for that the corner points mentioned in lines 3, 4 and 5 above were in conformance with the rules of the Michigan Board of Land Surveyors or by a Decree of a Court of Law, established, re-established, monumented, recovered, found as expressed below:

NOTE: Not more than 2 corners, all in the same town and range, may be recorded on this certificate.



A. Description of original monument and accessories and/or subsequent restoration:

(65) Corner common to Sections 9-10-15-16. Established in 1852 by Zelotes B. Searles: "S6'W Corrected... 80.00 Set post Cor. of Secs. 9,10,15,16. N. Pine 10 S50E 16. Fir 12 N40W 25." Found no subsequent record.

(15-Sec. 19) West 1/16 corner between Sections 19-30. Corner not established in the original survey. Found no subsequent record.

B. Description of corner evidence found and/or method applied in restoring or reestablishing corner:

(65) Original post and accessories were not recovered. Found no acceptable evidence of the position of the original corner on the ground. Reestablished the corner by double proportionate measurement to the original record between monumented corners 40.164 ch. West (40.125R), 40.083 ch. North (40.0R), 80.879 ch. East (80.80R), and 120.198 ch. South (119.95R). I observed the true bearing from the corner to the north: S3'02"W. At the position for the corner, I placed a 1" ID x 32" iron pipe capped with a 4" dia. cast aluminum MDNR tablet, appropriately stamped. From the position monumented I found an old squared post, down on the ground, apparently an approximate corner, N76W 51 ft. Corner placed and witnessed by B.Wheeler and O.Lampela, Baraga District Office.

(15-Sec. 19) Found no evidence of prior monumentation at the corner position. Established the corner on a line of mean true bearing between Quarter corner 19.9741 ch. East and Section corner 18.9260 ch. West, the position being 20 chains, proportionate to the original record, West of the Quarter corner. At the position for the corner I placed a 1" I.D. x 32" iron pipe capped with a 4" dia. cast aluminum MDNR tablet, appropriately stamped. Corner placed and witnessed by O.Lampela and B.Wheeler, Baraga District Office.

C. Description of monument for corner and accessories established to perpetuate locating the position of the corner:

(65) Set 1" pipe with 4" MDNR cap.

Blazed and scribed the following:

6" Spruce N30E 7.7' "S10 NBT"

10" Tamarack S45E 28.5' "S15 NBT"

6" Spruce S17W 31.7' "S16 NBT"

6" Spruce S81W 5.8' "S16 NBT"

Placed a squared spruce post adjacent.

Bearings are magnetic. Distances are to meas. notch.

(15) Set 1" pipe with 4" MDNR cap.

Blazed and scribed the following:

12" Y. Birch N39W 42.25' "1/16S BT"

15" Cedar N14W 53.95' do

12" Cedar N77E 57.75' do

17" Y. Birch S35W 64.0' do

Placed a squared cedar post adjacent.

Distances are to meas. notch. Bearings are magnetic.



Signed by

Stephan J. Szyszkoski

Date

12/29/98

Surveyor's Michigan License No.

33986

For the Michigan Department of Natural Resources - Forest Management Division