

LAND CORNER RECORDATION CERTIFICATE
Filing Requirement of Act 74, Mich. P.A. 1970

For corners in Iron (County)	Located In:	Corner Code #
1. Public Land Survey	T 46N R 34W	G4
	T 46N R 34W	H5
	T R	
	T R	
	T R	
2. Property Controlling In Section	S T R	
	S T R	
3. Miscellaneous Property In Sec.	S T R	
	S T R	

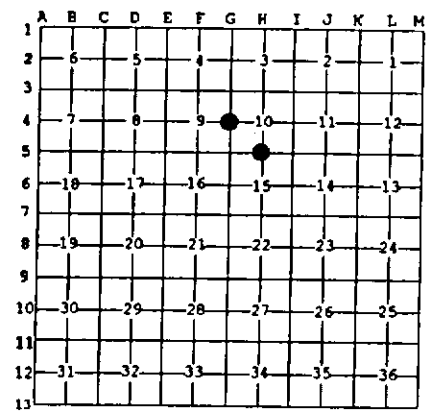
Register of Deeds Stamp & File Number

4. Lot No. _____, Recorded Plat _____
 5. Private Claims _____

Aug 06 1998

I, Stephan J. Szyszkoski, in a field survey on _____, 19____ do hereby state that under requirements of P.A. 74, Michigan P.A. of 1970, the corner points mentioned in lines 1 and 2 above were in conformance with regulations and rules therefore as required in the current manual of survey instructions of the United States Department of the Interior, Bureau of Land Management or by a decree of a Court of Law and for that the corner points mentioned in lines 3, 4 and 5 above were in conformance with the rules of the Michigan Board of Land Surveyors or by a Decree of a Court of Law, established, re-established, monumented, recovered, found as expressed below:

NOTE: Not more than 2 corners, all in the same town and range, may be recorded on this certificate.



A. Description of original monument and accessories and/or subsequent restoration:
 (G4) Quarter corner common to Sections 9-10. Established in 1852 by Zelotes B. Searles: "40.00 Set quarter Section post. Spruce 4 S50E 20, Spruce 2 N39W 10." Found no subsequent record.
 (H5) Quarter corner common to 10-15. Established in 1852 by Zelotes B. Searles: "40.40 Set quarter Section post. Y. Birch 18 S40E 4, Fir 6 N14W 25". Found no subsequent record.

B. Description of corner evidence found and/or method applied in restoring or reestablishing corner:

(G4) Recovered an old post point below the ground surface, preserved in the saturated muck, at record bearing and distance from the probable remains of the original bearing trees: a deteriorated spruce stump S50E 20 links, and the disintegrated remains of an unidentifiable stump N39W 10 links. The point is 40.169 ch. South of a perpetuated original corner, 40.083 ch. North of a reestablished corner, and 4.4' East of a straight line between the two. I accept the post point as the best available evidence of the position of the original corner and, in it's place, install a 1" ID x 32" iron pipe capped with a 4" dia. cast aluminum MDNR tablet, appropriately stamped. Corner placed and witnessed by D.Lampela and B.Wheeler, Baraga District Office.
 (H5) Original post and accessories were not recovered. Found no acceptable evidence of the position of the original corner on the ground. Reestablished the corner midway and on a line of mean true bearing between monumented section corners 40.440 chains east and west. At the position for the corner, I placed a 1" ID x 32" iron pipe capped with a 4" dia. cast aluminum MDNR tablet, appropriately stamped. Corner placed and witnessed by D.Lampela and B.Wheeler, Baraga District Office.

C. Description of monument for corner and accessories established to perpetuate locating the position of the corner:
 (G4) Set 1" pipe with 4" MDNR cap. Blazed and scribed the following:
 3" Tamarack S12E 64.9' "X NBT"
 2" Tamarack N17W 16.9' "X X"
 #350 sign on wooden pole at RR tracks N46E 255.7' to square nail.
 4" x 9 ft. squared cedar post N18W 1.2' to center. Centerline of RR tracks N46E 224.3'. Bearings are magnetic. Distances are to meas. notch.
 (H5) Set 1" pipe with 4" MDNR cap. Blazed and scribed the following:
 7" Spruce S81E 28.15' "1/4S NBT"
 4" Spruce S35E 14.1' do
 4" Spruce S77W 25.55' do
 7" Aspen N69W 7.5' do
 Placed a squared spruce post adjacent. Bearings are magnetic. Distances are to meas. notch.



Signed by Stephan J. Szyszkoski Date 12/29/98
 Surveyor's Michigan License No. 33986

For the Michigan Department of Natural Resources - Forest Management Division