

**SURVEY &
REMONUMENTATION**

MAY 05 1997

COMMISSION

116487

**LAND CORNER RECORDATION CERTIFICATE
Filing Requirement of Act 74, Mich. P.A. 1970
Isabella County Remonumentation**

For Corners in
Isabella

(County)

Located In:

Corner Code#:

- | | | |
|--------------------------------------|--------------------------------|------------|
| 1. Public Land Survey | T. <u>14 N.</u> R. <u>5 W.</u> | <u>K-8</u> |
| | T. _____ R. _____ | _____ |
| | T. _____ R. _____ | _____ |
| 2. Public Controlling in Section | S. _____ T. _____ R. _____ | _____ |
| | S. _____ T. _____ R. _____ | _____ |
| 3. Miscellaneous Property in Section | S. _____ T. _____ R. _____ | _____ |
| | S. _____ T. _____ R. _____ | _____ |
| 4. Lot No. _____, Recorded Plat | _____ | _____ |
| 5. Private Claims | _____ | _____ |

STATE OF MICHIGAN
COUNTY OF ISABELLA
RECEIVED FOR RECORD

DEC 26 9 21 AM '96
000111

SHARON A. BROWN
REGISTER OF DEEDS

Register of Deeds Stamp & File Number

I, Jan S. Fokens, in a field survey on Oct., 1996, do hereby state that under requirements of P.A. 74, Michigan P.A. of 1970, the corner points mentioned in lines 1 and 2 above were in conformance with regulations and rules therefore as required in the current manual of survey instructions of the United States Department of the Interior, Bureau of Land Management or by a decree of a Court of Law and/or that the corner points mentioned in lines 3, 4 and 5 above were in conformance with the rules of the Michigan Board of Land Professionals or by a Decree of a Court of Law, established, re-established, monumented, recovered, found as expressed below.

NOTE: Not more than 2 corners, all in the same town and range, may be recorded on this certificate.

A. Description of original monument and accessories and/or subsequent restoration:

1. Original G.L.O. Survey:

Township lines 2nd Quarter 1837 John Hodgson
Subdivision & Re-survey 4th Quarter 1838 R. Whitcomb
Page 406 original field notes

2. County Survey Records:

Book 2, Pages 320 and 321 November 1886 Joseph A. Graham
Book 3, Page 125 July 30, 1899 by G.H. Denslow
Book 4, Page 93 April 1910 by William H. Trussell

3. L.C.R.C.:

None

4. Surveys of Record:

Liber 2, Page 90 Found 1" pipe
Liber 5, Page 382 Found 1 1/4" pipe

5. Unrecorded Surveys:

Isabella County Road Commission - Section Corner Map

Witnesses

B. Description of corner evidence found and/or method applied in restoring or re-establishing corner:

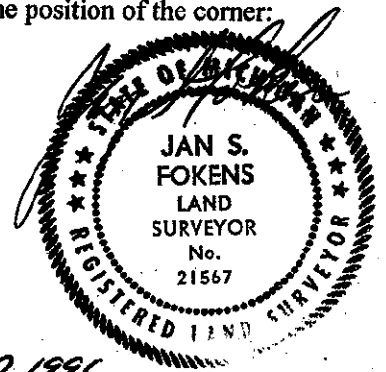
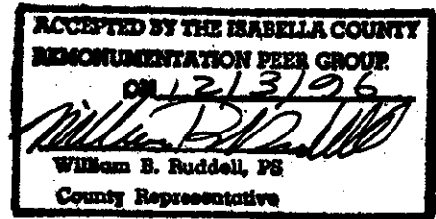
This corner established in Isabella County Remonumentation Program. See dossier for detailed report.

- Found 1 1/4" pipe 2.0' long at 0.5 feet below surface (held)
- Found axle shaft 2.5' long at 1.0' below surface 11.5" W. of found 1 1/4" pipe (not used)
- Excavated to depth of 3.5' - No evidence of further material

Accepted as best available evidence of the position of the original corner and replaced with Standard Monument Corner K-8 was approved for remonumentation at a Peer Review Committee meeting on December 3, 1996.

C. Description of monument for corner and accessories established to perpetuate locating the position of the corner:

Set Standard Isabella County Monument in Monument Box.
N.70°E. 60.0' Found nail in 10" Cherry
S.72°E. 121.90' 12" CMP
S.88°W. 53.13' Found nail and tag in power pole
N.45°W. 51.11' Set nail and tag in South face of 12" Elm
N.01°-39'W., 2663.80', T.14N.-R.5W., (K-7)
S.01°-39'-36'E., 2661.06', T.14N.-R.5W., (K-9)



Signed by Jan S. Fokens
Surveyor's Michigan License No. 21567

Date Dec. 17, 1996