

TIS, R1E

TIS, R2E

SEE JACKSON CO  
MISC #6

12-10-55  
Pettison  
Scott  
Miller  
O'Connor

1/4 cor.  
3" F.C. Post

A-10

25

30

A-11

36

31

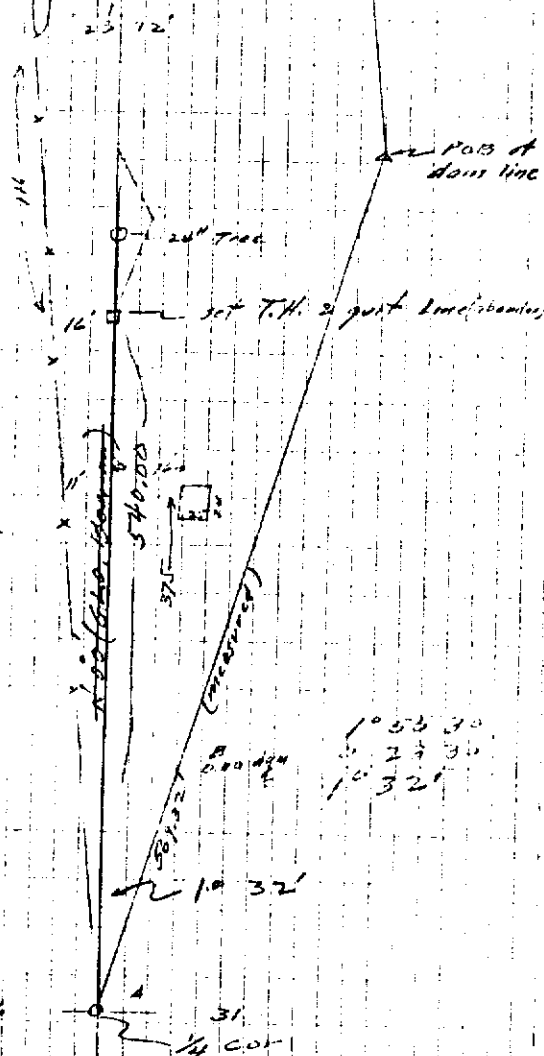
Sec. Corn Plat.  
set by G.L.O.

070.0875  
5280 G.L.O.

$$\frac{298'}{5250} = .00555 \text{ OVERLAY}$$

A-12

1/4 cor.  
3" F.C. Post



1053 30  
27 30  
10 32'