

Note: - During Jan 1956 + Dec 1955 Diligent search was made to locate any previously established mining corner. Jackson Co. Surveyor Fred Riley had no data on any monument.  
 So - We extended the Twp. Line N from  $\frac{1}{4}$  cor. the metered distance (apply the provision bet.  $\frac{1}{4}$  & S.C. i) to the M.C. ON Jan 19, 1956 set 4" cedar post, 9' long in ditch at 1892.18' N. of  $\frac{1}{4}$  cor. Post has a top with vert. spike in top for exact point.  
 W.L.P.

Sec 36  
 Sec 31

SEE JACKSON CO  
 MISC # 6

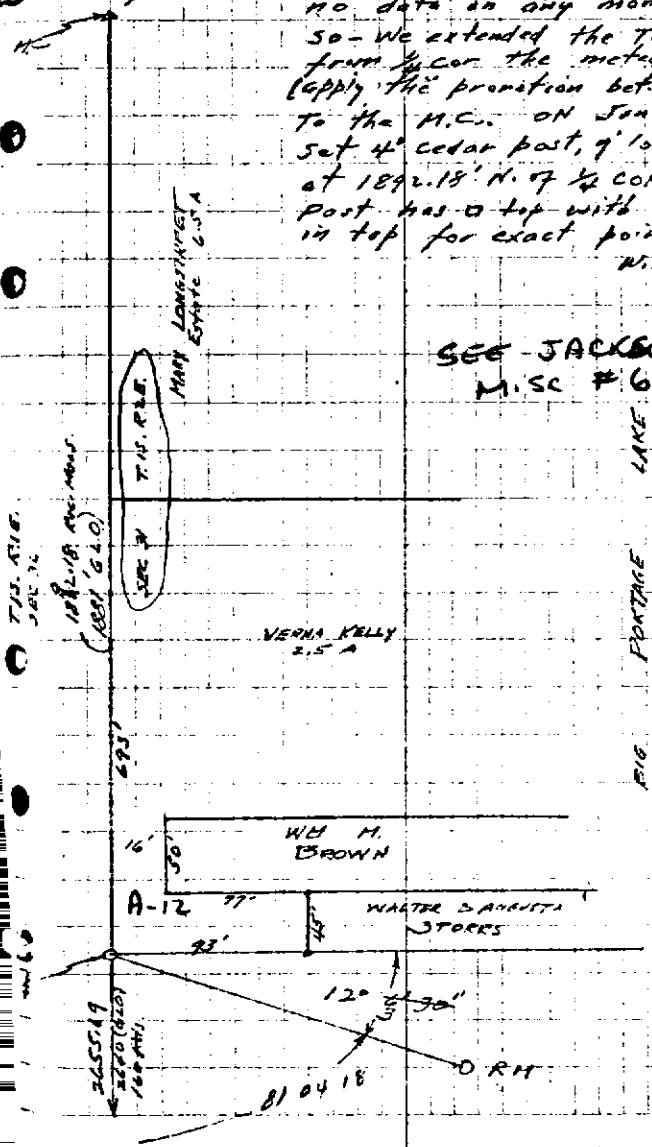


FIG. FORTAGE LAKE