

C-9

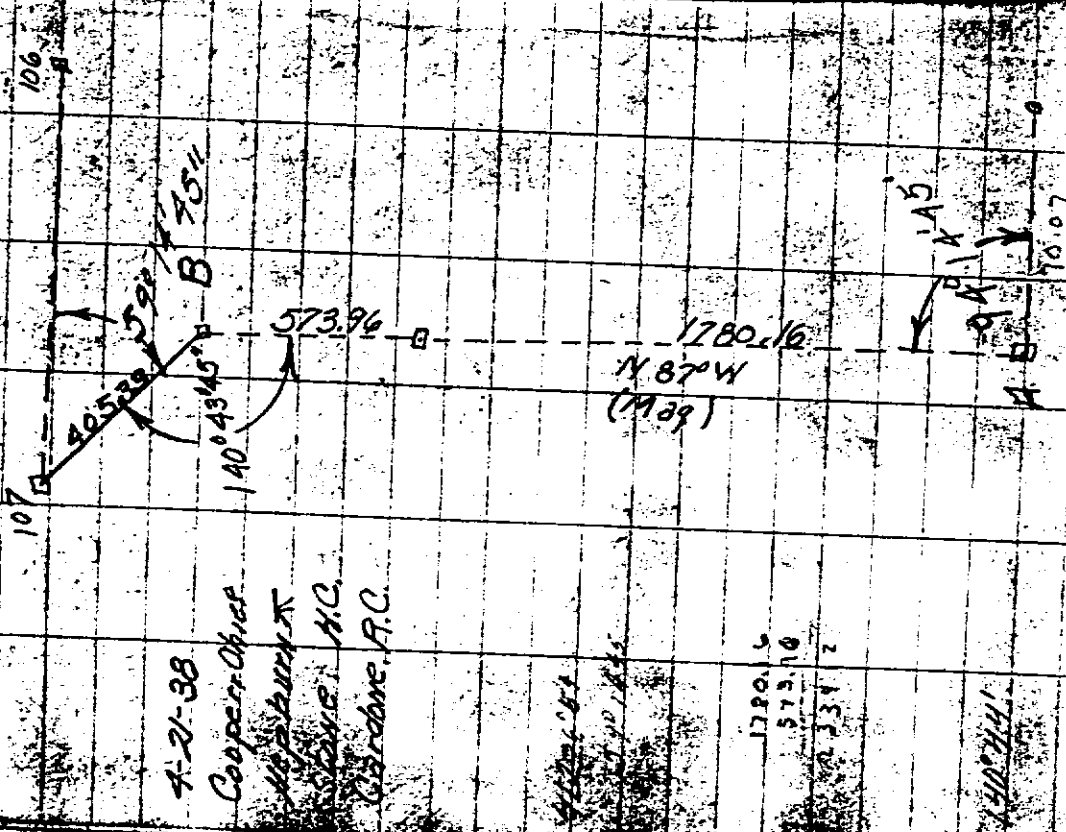
Sec. Cor. Common to 19-20-30-29
T. 15. R. 2E.
4-21-38

Weddig in Range of E to E + 11 ft. ft.
Pt. 6" x 6" x 4 1/2" deep. Found, also det.
19 d.o. Minerals. Field stones set 3/4
around a dark perpendiculer stone.
Said streak being pointed at the
lower end.
Were placed with 3/4" 1 1/2" water
pipe. Coupling end up, and made
witnesses as follows:-

- ST 1/3 SW SE, Cor. Frame House 122
- N 89 W - NE Cor. Frame House 110
- S 64 W 24" PINE
- S 83 30 W 1.5" PINE
- N 35 W 2.4" B.O.
- N 33 E 10" WALNUT 407
- N 19 30 E 16" WALNUT 115
- N 59 15 W 12" APPLE 36
- N 39 W 8" CATALPA 68

Plotted in map

N.E. in of E Post Sec 32 T. 15. R. 2E.
with Little Portage Lake traverse



4-21-38
Cooper, Ohio
H. S. H. K.
Staves, H.C.
Gardner, R.C.

1780.16
573.10
1780.16

F OR Post Sec 32
T. 15. R. 2E