

LAND CORNER RECORDATION CERTIFICATE
Filing Requirement of Act 74, Mich. P.A. 1970

For corners in
Jackson
(County)

Located In: _____ Corner Code 11

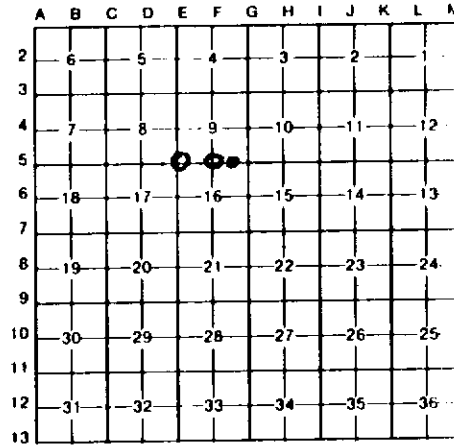
- | | | | | | |
|------------------------------------|---|----|---|---------|----------|
| 1. Public Land Survey | T | 1S | R | 2W | E-5, F-5 |
| | T | | R | | |
| | T | | R | | |
| | T | | R | | |
| 2. Property Controlling in Section | S | 9 | T | 1S R 2W | # 16 |
| | S | | T | | |
| 3. Miscellaneous Property in Sec. | S | | T | | |
| | S | | T | | |

Register of Deeds Stamp & File Number

4. Lot No. _____, Recorded Plat _____
 5. Private Claims _____

I, Donald L. Bissell in a field survey on March, 19 89
do hereby certify that under requirements of P.A. 74, Michigan P.A. of 1970, the corner points mentioned in lines 1 and 2 above were in conformance with regulations and rules therefore as required in the current manual of survey instructions of the United States Department of the Interior, Bureau of Land Management or by a decree of a Court of Law and/or that the corner points mentioned in lines 3, 4 and 5 above were in conformance with the rules of the Michigan Board of Land Surveyors or by a Decree of a Court of Law; established, re-established, monumented, re-monumented, recovered, found as expressed below:

NOTE: Not more than 4 corners, all in the same town and range, may be recorded on this certificate.



A. Description of original monument and accessories and/or subsequent restoration:

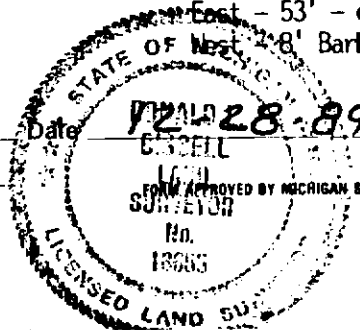
B. Description of corner evidence found and/or method applied in restoring or reestablishing corner:

- | | |
|--|---|
| E-5 | F-5 |
| SW Cor. Sec. 9 | S $\frac{1}{4}$ Cor. Sec. 9 |
| Found fireclay cylinder | Found Fireclay cylinder |
| Placed 5" x 30" Well casing over Fireclay cylinder | Set 5" x 36" Pipe over Fireclay and filled with concrete. |

C. Description of monument for corner and accessories established to perpetuate locating the position of the corner:

- | | | |
|------------------------------|--------------------------------------|---|
| E-5 | F-5 | # 16. |
| SW Cor. Sec. 9 | S $\frac{1}{4}$ Cor. Sec. 9 | S 1/8 Cor. SE $\frac{1}{4}$, Sec. 9 - Set 4" x 36" |
| Fireclay Cylinder inside | 5" x 36" Pipe over Fireclay cylinder | Conc. mon. |
| 5" well casing | N06°W - 15.91' - 6" Oak | N05°E - 40.03' - 18" Oak |
| S22°E - 19.11' - 14" W. Ash | S32°W - 27.60' - 6" Black Cherry | N71°E - 23.49' - 8" Elm |
| N63°W - 24.75' - 12" Oak | S47°W - 6.55' - Twin Black Cherry | S06°W - 12.92' - 8" Maple |
| N04°E - 43.54' - 10" Hickory | S85°W - 10.60' - Thornapple | S62°W - 17.30' - 12" Maple |
| N86°E - 29.47' - 16" Poplar | Fence Running N, S & W | North - 56' edge of River. |
| | | East - 53' - edge of River |
| | | 8' Barbed wire fence |

Signed by Donald L. Bissell
 Surveyor's Michigan License No. 18655



FORM APPROVED BY MICHIGAN STATE BOARD OF LAND SURVEYORS, JAN. 28, 1971
 REVISED MAY 14, 1975
 REVISED JAN., 1983