

**JACKSON COUNTY
APPROVED LAND CORNER
P.A. 345 of 1990**

Chairman Dean Hubbard
Date Dec. 13, 1995
For corners in

NORTHEAST CORNER SECTION 33
TOMPKINS TOWNSHIP
LAND CORNER RECORDATION CERTIFICATE
Filing Requirement of Act 74, Mich. P.A. 1970

LIBER 1501 PAGE 1082

JACKSON (County) Located In: Corner Code #

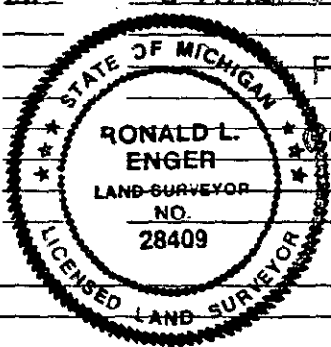
1. Public Land Survey T 1S R 2W G-11 REMONUMENTATION
T R
T R
T R

2. Property Controlling S T R
in Section S T R

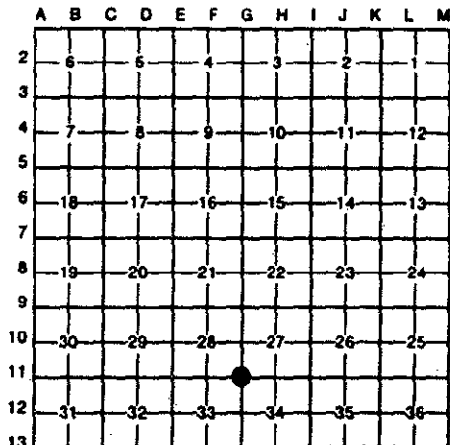
3. Miscellaneous S T R
Property in Sec. S T R

4. Lot No. _____, Recorded Plat _____

5. Private Claims _____



STATE OF MICHIGAN
JACKSON COUNTY
RECORDED
FEB 22 1996
29 DEC 95 10:27 A.M.
GERALD J. McDEVITT
REGISTER OF DEEDS
Register of Deeds Stamp & File Number



I, RONALD L. ENGER, in a field survey on NOVEMBER 24, 19 95, do hereby certify that under requirements of P.A. 74, Michigan P.A. of 1970, the corner points mentioned in lines 1 and 2 above were in conformance with regulations and rules therefore as required in the current manual of survey instructions of the United States Department of the Interior, Bureau of Land Management or by a decree of a Court of Law and/or that the corner points mentioned in lines 3, 4 and 5 above were in conformance with the rules of the Michigan Board of Land Surveyors or by a Decree of a Court of Law, established, re-established, monumented, re-monumented, recovered, found as expressed below:

NOTE: Not more than 4 corners, all in the same town and range, may be recorded on this certificate.

A. Description of original monument and accessories and/or subsequent restoration:

1. POST SET IN ORIGINAL GOVERNMENT SURVEY BY LUCIUS LYON, DEPUTY SURVEYOR, BETWEEN FEB. 2 AND FEB. 12, 1825 AND TWO WITNESSES RECORDED:
B.O. 19 N1E 96 (63.4')
W.O. 11 N86 1/2E 64 (43.2')

2. ON OCTOBER 26, 1885, JOHN HOLCROFT REPORTED: "FOUND STAKE AT CORNER WITH BOTH ORIGINAL WITNESSES STANDING" AND RECORDED TWO WITNESSES:
B. OAK 18 N1/2E 27 1/2 (18.2') \$ 2.00 REMONUMENTATION
DO 12 S49 3/4E 17 1/3 (11.4') \$ 9.00 CORNER REMONUMENTATION

CONTINUED ON BACK

B. Description of corner evidence found and/or method applied in restoring or reestablishing corner:

SEARCHED AT APPARENT LOCATION OF CORNER AND FOUND 1/2" REBAR AT SOUTHWEST CORNER OF RAILROAD TIE FENCE POST AT INTERSECTION OF NORTH-SOUTH AND EAST-WEST FENCES. FOUND NO EVIDENCE OF GLO OR HOLCROFT'S WITNESSES. EXCAVATED 4' N-S BY 6' E-W CENTERED ON THE RAILROAD TIE FENCE POST TO A DEPTH OF 3.5' AND FOUND A TON OF ROCKS, AND NO EVIDENCE OF SURVEYOR MARKERS. FOUND WIRE AND REMAINS OF OLD BROKEN OFF FENCE POST 6' WEST OF THE RAILROAD TIE POST, SO DUG SECOND HOLE 6' E-W AND 4' N-S IMMEDIATELY WEST OF FIRST HOLE TO DEPTH OF 3' AND FOUND NOTHING (TOTAL HOLE COVERED AN AREA TO 2' NORTH, 2' SOUTH, 3' EAST AND 9' WEST OF THE RAILROAD TIE FENCE POST). PROBED THROUGHOUT BOTH HOLES COVERING AN ADDITIONAL 2' ON ALL SIDES TO NO AVAIL. ALSO PROBED ENTIRE AREA IN A 50' DIAMETER CIRCLE CENTERED ON THE RAILROAD TIE POST AND EXCAVATED EVERY INDICATION OF STONE. DID NOT FIND ANY

CONTINUED ON BACK

C. Description of monument for corner and accessories established to perpetuate locating the position of the corner:

G-11 T1S R2W
4" DIAMETER BY 36" LONG CONCRETE MONUMENT WITH ALUMINUM CAP LS 28409
082° NAZ RR TIE FENCE POST (ALS') 5.76' 40 PENNY SPIKE IN SOUTH SIDE
160° NAZ 24" OAK 64.44' NAIL AND TAG LS #28409 IN NE SIDE
204° NAZ 6" ELM (ALS') 19.43' 40 PENNY SPIKE IN EAST SIDE
227° NAZ 18" CHERRY 39.13' NAIL AND TAG LS #28409 IN EAST SIDE
235° NAZ 12" ASH (ALS' ELM) 15.28' 40 PENNY SPIKE IN NORTH SIDE
297° NAZ 18" ASH 53.50' NAIL AND TAG LS #28409 IN NORTH SIDE
360° NAZ 3" ELM (ALS') 4.90' 16 PENNY NAIL IN WEST SIDE

MONUMENT IS AT SW CORNER OF RAILROAD TIE FENCE POST.

NOTE: NAZ IS MAGNETIC AZIMUTH MEASURED FROM NORTH

Signed by Ronald L Enger Date DECEMBER 12, 1995
Surveyor's Michigan License No. 28409

G-11 T1S R2W
PART A CONTINUED

3. RON KELLER, LS 20707, RECORDED CORNER IN LIBER 3 OF CORNERS, PAGE 208, ON AUGUST 13, 1979 (FIELD SURVEY IN JULY 1979) AND IN LIBER 3 OF CORNERS, PAGE 265 ON JULY 1, 1980 (FIELD SURVEY IN MAY 1980). BOTH CERTIFICATES LISTED THE FOLLOWING MONUMENT AND WITNESSES:

FOUND REBAR AT INTERSECTION OF OLD FENCE
EAST RR TIE FENCE CORNER 19.3'
N10°W 12" CHERRY 37.6'
S85°E 30" OAK 63.2'

4. ALAN SCHEPPELMAN, PS #35998, RECORDED CORNER IN LIBER 4 OF CORNERS, PAGE 277, ON MAY 5, 1994 (FIELD SURVEY ON APRIL 9, 1993)

1/2" REROD AT SW CORNER OF CORNER RR TIE FENCE POST

40D NAIL S. SIDE FENCE POST EAST 5.83'

40D NAIL E. SIDE 6" ELM S15°W 19.51'

40D NAIL N. SIDE 12" ELM S70°W 15.31'

NAIL W. SIDE 3" ELM NORTH 4.83'

PART B CONTINUED

MORE EVIDENCE OF CORNER LOCATION. TRAVERSED LINE FROM G-12 (PIPE OVER FIRECLAY POST) TO G-9 (FIRECLAY POST). G-10 IS IN LORD'S LAKE. RELATION OF BAR AT G-11 IS IN GOOD ACCORD WITH GLO DISTANCES. MEASURED NORTH 5331.60' TO G-9 AND SOUTH 2667.09' TO G-12. SUSPECT THAT THE FIRECLAY POST WAS DESTROYED WHEN THE RAILROAD TIE FENCE POST WAS PLACED. THE RAILROAD TIE FENCE POST WAS SET TO A DEPTH OF 4' BELOW THE GROUND SURFACE. USED THE 1/2" REBAR AS MARKER FOR CORNER AS IT IS IN CLOSE PROXIMITY TO THE SUSPECTED LOCATION OF HOLCROFT'S FIRECLAY. SET STANDARD MONUMENT FOR PA 345 REMONUMENTATION IN JACKSON COUNTY IN PLACE OF THE 1/2" REBAR.