

JACKSON COUNTY APPROVED LAND CORNER P.A. 345 of 1990

Chairman Dean K. [Signature]

Date Dec. 20, 1994

NW CORNER SECTION 26 TOMPKINS TWP

NE CORNER SECTION 27 TOMPKINS TOWNSHIP

LAND CORNER RECORDATION CERTIFICATE

Filing Requirement of Act 74, Mich. P.A. 1970

LINER 1465 PAGE 1293

For corners in

JACKSON (County)

Located In:

Corner Code #

1. Public Land Survey	T	1S	R	2W	I-9
	T		R		
	T		R		
	T		R		
2. Property Controlling in Section	S		T	R	
	S		T	R	
3. Miscellaneous Property in Sec.	S		T	R	
	S		T	R	

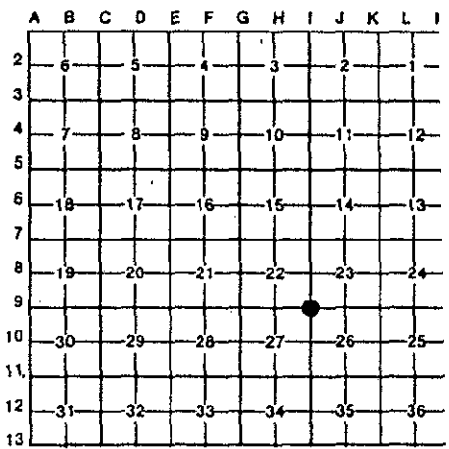
STATE OF MICHIGAN JACKSON COUNTY RECORDED

2 MAY 95 8:22 A.M.

GERALD J. McDEVITT REGISTER OF DEEDS

Register of Deeds Stamp & File Number

4. Lot No. _____, Recorded Plat _____
5. Private Claims _____



I, RONALD L. ENGER, in a field survey on OCTOBER 11, 1994, do hereby certify that under requirements of P.A. 74, Michigan P.A. of 1970, the corner points mentioned in lines 1 and 2 above were in conformance with regulations and rules therefore as required in the current manual of survey instructions of the United States Department of the Interior, Bureau of Land Management or by a decree of a Court of Law and/or that the corner points mentioned in lines 3, 4 and 5 above were in conformance with the rules of the Michigan Board of Land Surveyors or by a Decree of a Court of Law; established, re-established, monumented, re-monumented, recovered, found as expressed below:

NOTE: Not more than 4 corners, all in the same town and range, may be recorded on this certificate.

A. Description of original monument and accessories and/or subsequent restoration:

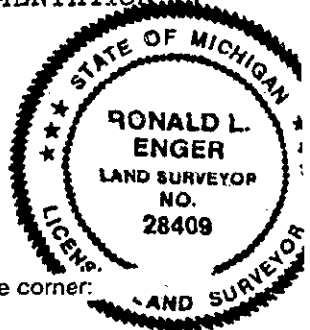
1. POST SET IN ORIGINAL GOVERNMENT SURVEY BY LUCIUS LYON, DS, BETWEEN FEB 2 AND FEB 12, 1825 AND TWO BEARING TREES WERE RECORDED: WO 13 N66W 44 AND DO 11 S50E 99.

2. ON OCTOBER 6, 1885, JOHN HOLCROFT REPORTED "FOUND REMAINS OF OLD STAKE AND BOTH OLD WITNESS STUMPS STANDING" AND RECORDED 2 WITNESSES: Y. OAK 20 N78-1/2E 47-1/4 (31.2') AND (OLD WITNESS) W. OAK 24 N66W 43-1/4 (28.5') \$ 2.00 REMONUMENTATION \$ 9.00 CORNER REMONUMENTATION

CONTINUED ON BACK

B. Description of corner evidence found and/or method applied in restoring or reestablishing corner:

SEARCHED AT APPARENT LOCATION OF CORNER AND FOUND 3/4" PIPE NEAR ASPHALT ROAD SURFACE 7' WEST OF CENTERLINE OF FORD ROAD. DUG OUT THE 3/4" PIPE AND MADE 5' DEEP HOLE AND FOUND FIRECLAY POST DIRECTLY BELOW THE 3/4" PIPE. ALSO FOUND A 1" PIPE ON NE SIDE OF THE FIRECLAY. ACCEPTED THE FIRECLAY AS CORNER POSITION AS PERPETUATED BY HOLCROFT. SET STANDARD MONUMENT FOR PA 345 REMONUMENTATION IN JACKSON COUNTY DIRECTLY OVER THE FIRECLAY.



C. Description of monument for corner and accessories established to perpetuate locating the position of the corner:

I-9 T1S R2W			
4 INCH DIAMETER BY 36 INCH LONG CONCRETE MONUMENT AND ALUMINUM CAP LS 28409			
275° NAZ 36" OAK	86.13'	NAIL AND TAG LS #28409 IN N SIDE	
52° NAZ 14" WALNUT	50.08'	SPIKE IN SE SIDE	
219° NAZ 13" WALNUT	37.25'	NAIL AND TAG LS #28409 IN SE SIDE	
194° NAZ 9" TW HICKORY	107.80'	NAIL AND TAG LS #28409 IN E SIDE	
94° NAZ 22" CHERRY	66.53'	NAIL AND TAG LS #28409 IN N SIDE	

NOTE: NAZ IS MAGNETIC AZIMUTH MEASURED FROM NORTH.

Signed by Ronald L. Enger

Date DECEMBER 19, 1994

Surveyor's Michigan License No. 28409

TLS R2W
PART A CONTINUED

3. UNDATED INFORMATION IN THE FILES OF THE JACKSON COUNTY ROAD COMMISSION DOES NOT DESCRIBE THE CORNER MARKER BUT SHOWS 6 WITNESSES: WEST 18" OAK 86.68'; N9°W 10" OAK 148.45'; N47°E 10" WALNUT 50.12'; EAST 12" CHERRY 65.56'; S10°W 6" HICKORY 108.70' AND S43°W 8" WALNUT 46.40' AND NOTES "7' WEST OF CENTERLINE OF ROAD".
4. ACT 74 LAND CORNER RECORDATION CERTIFICATE (LIBER 2 PAGE 568) FILED BY RICHARD E. GUTEKUNST, RLS 7863 ON APRIL 27, 1976 STATES THAT ON JULY 29, 1967 HE FOUND A FIRECLAY 3.3' BELOW THE GRAVEL SURFACE AND SET AN IRON 2' BELOW SURFACE AND ANOTHER IRON ON TOP OF THE FIRECLAY AND 7/10 BELOW SURFACE. SIX WITNESSES ARE SHOWN: WEST, 18" OAK, 86.68'; N9°W, 10" OAK, 148.45'; N47°E, 10" WALNUT, 50.12'; EAST, 12" CHERRY, 65.56'; S10°W, 6" HICKORY, 108.70' AND S43°W, 8" WALNUT, 46.40'.
5. ACT 74 LAND CORNER RECORDATION CERTIFICATE (LIBER 4 PAGE 60) FILED BY RONNIE M. LESTER, LS 18998 ON JANUARY 6, 1988 STATES THAT ON DECEMBER 7, 1987 HE FOUND A 1" PIPE, 0.7' BELOW SURFACE OF ASPHALT AND SHOWS 4 WITNESSES: FOUND NAIL ON SE SIDE 15" WALNUT, SW, 33.5'; FOUND NAIL ON EAST SIDE 15" ASH, SSW, 66.5'; FOUND NAIL ON SE SIDE 12" WALNUT, NE, 50.1' AND NORTHWEST CORNER OF FRAME HOUSE #8999, SE, 153.5'.