

**JACKSON COUNTY
APPROVED LAND CORNER
P.A. 345 of 1990**

**NW CORNER OF SECTION 35
TOMPKINS TOWNSHIP**

LIBER 1465 PAGE 1292

Chairman Alan R. Hubbard
Date Dec. 30, 1994
For corners in

**LAND CORNER RECORDATION CERTIFICATE
Filing Requirement of Act 74, Mich. P.A. 1970**

JACKSON (County) Located In: _____ Corner Code **I-11**

1. Public Land Survey	T	1S	R	2W	_____
	T	_____	R	_____	_____
	T	_____	R	_____	_____
	T	_____	R	_____	_____
2. Property Controlling in Section	S	_____	T	_____	_____
3. Miscellaneous Property in Section	S	_____	T	_____	_____
	S	_____	T	_____	_____
	S	_____	T	_____	_____

4. Lot No. _____, Recorded Plat _____
5. Private Claims _____

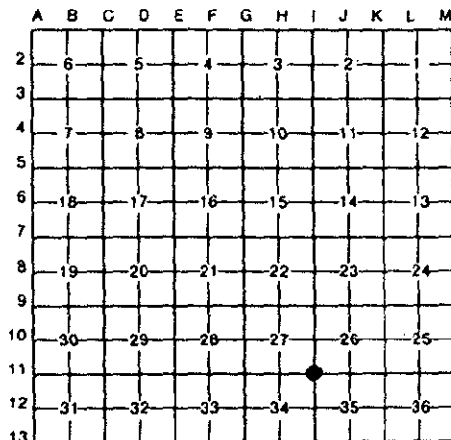
STATE OF MICHIGAN
JACKSON COUNTY
RECORDED

2 MAY 95 8:22 A.M.

GERALD J. McDEVITT
REGISTER OF DEEDS

Register of Deeds Stamp & File Number

SURVEY & REMONUMENTATION
MAY 17 1995
COMMISSION

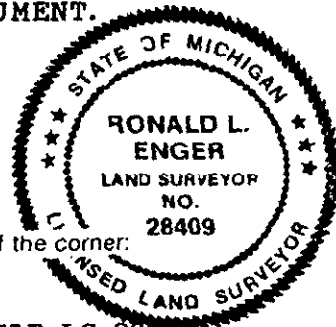


I, **RONALD L. ENGER** in a field survey on **AUGUST 26**, 19**94**, do hereby certify that under requirements of P.A. 74, Michigan P.A. of 1970, the corner points mentioned in lines 1 and 2 above were in conformance with regulations and rules therefore as required in the current manual of survey instructions of the United States Department of the Interior, Bureau of Land Management or by a decree of a Court of Law and/or that the corner points mentioned in lines 3, 4 and 5 above were in conformance with the rules of the Michigan Board of Land Surveyors or by a Decree of a Court of Law; established, re-established, monumented, re-monumented, recovered, found as expressed below:

NOTE: Not more than 4 corners, all in the same town and range, may be recorded on this certificate.

- A. Description of original monument and accessories and/or subsequent restoration:
1. POST SET IN ORIGINAL GOVERNMENT SURVEY BY LUCIUS LYON, DEPUTY SURVEYOR, BETWEEN FEB. 2 AND FEB. 12 WITH THE FOLLOWING WITNESSES: \$ 2.00 REMONUMENTATION
W.O. 22 S1W 100 (66.0') 1275 \$ 7.00 CORNER REMONUMENTATION
DO. 11 N79E 121 (79.9')
 2. ON OCT. 9, 1885, JOHN HOLCROFT REPORTED: "CORNER GONE - FOUND 2ND ORIGINAL WITNESSES STANDING ALSO STUMP OF OLD LINE TREE AT CORRECT DISTANCE 22.84 (CHAINS) SOUTH OF CORNER."
OLD WITNESS ALLOWING FOR GROWTH W.O. 21 N79E 120½ (79.5')
TAMARACK 8 S16 3/4W 5½ (3.6')

B. Description of corner evidence found and/or method applied in restoring or reestablishing corner:
SEARCHED AT APPARENT LOCATION OF CORNER AND FOUND A 3/4" PINCHPIPE IN REMAINS OF ANCHOR POST OF FENCE LINE TO NORTH AND WEST. DRAINAGE DITCH RUNS FROM NORTH AND TURNS WEST AT CORNER WITH FENCE CORNER JUST NORTH AND WEST OF DITCH. EXCAVATED 10' DIAMETER HOLE INTO WATER AND NATURAL GROUND AND FOUND NOTHING MORE. BELIEVE FIRE CLAY WAS DESTROYED DURING FENCE AND DITCH CONSTRUCTION. ACCEPTED PINCHPIPE AS PERPETUATION OF CORNER AND REPLACED WITH STANDARD MONUMENT PA 345 REMONUMENTATION IN JACKSON COUNTY. FILED STONES AROUND THE MONUMENT.



Description of monument for corner and accessories established to perpetuate locating the position of the corner:

**I-11 T1S R2W
4 INCH DIAMETER BY 36 INCH LONG CONCRETE MONUMENT AND ALUMINUM CAP LS 28409**

- | | | | |
|-----------|----------------|---------|--|
| 020° NAZ | 11" ASH | 17.25' | 20 PENNY NAIL AND TAG LS 28409 IN W. SIDE |
| 050° NAZ | 12" MAPLE | 40.73' | 20 PENNY NAIL AND TAG LS 28409 IN NW. SIDE |
| -075° NAZ | 36" OAK | 16.41' | 20 PENNY NAIL AND TAG LS 28409 IN N. SIDE |
| -088° NAZ | 18" OAK | 62.62' | 20 PENNY NAIL AND TAG LS 28409 IN N. SIDE |
| 098° NAZ | 17" TWIN MAPLE | 100.56' | 20 PENNY NAIL AND TAG LS 28409 IN N. SIDE |

NOTE: NAZ IS MAGNETIC AZIMUTH MEASURED FROM NORTH

Recorded by Ronald L. Enger Date DECEMBER 30, 1994
Surveyor's Michigan License No. 28409