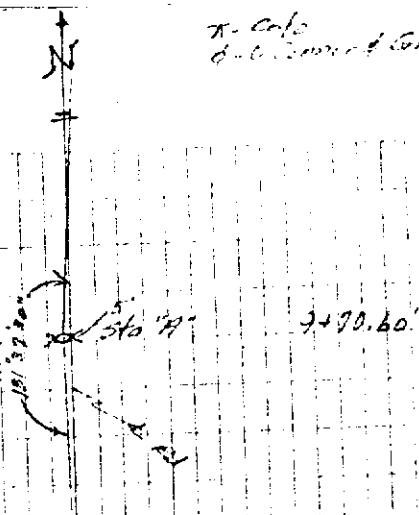


12-29-52
35° cloudy

SEE JACKSON Co
Misc #6

K. Cole
D. L. ... & ...

12 = 181° 37' 30"
20 = 31' 15"
Mean B = 181° 37' 30"



TOWN CORNER
T1 ⊗ S, R ⊗ 2 E
DPR 1992

Note: see notes by Soll (book 1, p 32)
Found wagon axle set by F. J. V. Soll on 10-7-35
(72 west)
Top was bent over 11" from plumb. Set a track
spike over axle. on plumb, about 5" under ground.

