

MAR 13 2000

SECTION

JACKSON COUNTY APPROVED LAND CORNER P.A. 343 of 1990

Chairman Dean E. Hubbard NORTH 1/4 POST, SECTION 29, BLACKMAN TOWNSHIP

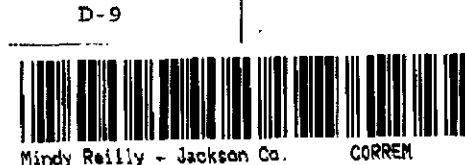
Date Nov. 18, 1998

LAND CORNER RECORDATION CERTIFICATE Filing Requirement of Act 74, Mich. P.A. 1970

For corners in JACKSON (County)

Located In: Corner Code #

- 1. Public Land Survey T ___ R ___
- 2. Property Controlling S ___ T ___ R ___
- 3. Miscellaneous S ___ T ___ R ___
- Property in Sec. S ___ T ___ R ___

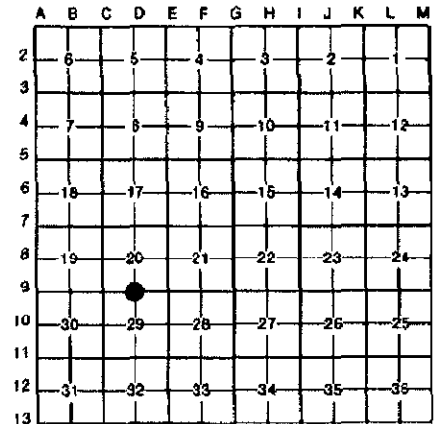


2126315 Page: 1 of 2 08/11/1999 10:56A L-1609 P-414

Register of Deeds Stamp & File Number

- 4. Lot No. _____, Recorded Plat _____
- 5. Private Claims _____

ALAN L. SCHEPPELMAN APRIL 15 98
I, _____, in a field survey on _____, 19____, do hereby certify that under requirements of P.A. 74, Michigan P.A. of 1970, the corner points mentioned in lines 1 and 2 above were in conformance with regulations and rules therefore as required in the current manual of survey instructions of the United States Department of the Interior, Bureau of Land Management or by a decree of a Court of Law and/or that the corner points mentioned in lines 3, 4 and 5 above were in conformance with the rules of the Michigan Board of Land Surveyors or by a Decree of a Court of Law; established, re-established, monumented, re-monumented, recovered, found as expressed below:



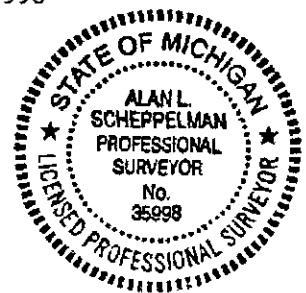
NOTE: Not more than 4 corners, all in the same town and range, may be recorded on this certificate.

- A. Description of original monument and accessories and/or subsequent restoration:
HERVEY PARKE, D.S. 40.21 SET QUARTER SECTION POST AT AVERAGE DISTANCE.
MARCH 8, 1825 HICKORY 16, N41°E 13 LINKS (8.58')
W. OAK 30, S45½°W 124 LINKS (81.84')
JOHN HOLCROFT FOUND POST AT CORNER AND SECOND ORIGINAL WITNESS STUMP AGREEING.
JULY 20, 1887 BURR OAK 9, S18°E 54½ LINKS (35.97')
MAPLE 12, N64½°W 143 LINKS (94.38')

CONTINUED ON BACK

- B. Description of corner evidence found and/or method applied in restoring or reestablishing corner:
FOUND 1" x 30" FROST PIN IN MONUMENT BOX ON THE CENTERLINE OF EAST-WEST ROAD. EXCAVATED AND FOUND NO ADDITIONAL EVIDENCE BELOW THE FROST PIN. EXCAVATE N80°W 4.65' AND FOUND BENT MONUMENT AS SET BY SOLL. THE MONUMENT WAS 1.0' BELOW THE SURFACE OF THE PAVEMENT. ACCEPTED THE MONUMENT AS A CAREFUL AND FAITHFUL PERPETUATION OF THE POSITION OF THE ORIGINAL CORNER. SET A 20" x 4" CAST IRON HARRISON MONUMENT OVER THE BENT MONUMENT. JACKSON COUNTY ROAD COMMISSION SET MONUMENT BOX DURING ROAD RECONSTRUCTION.

- C. Description of monument for corner and accessories established to perpetuate locating the position of the corner:
SET 4" X 20" CAST IRON HARRISON MONUMENT WITH BRASS CAP STAMPED "D-9 LS 35998"
N24°E SE CORNER OF FOUNDATION TO NEW RESTAURANT 168.59'
S72°E SET NAIL & TAG 35998 IN SOUTH SIDE OF POWER POLE 116.44'
S57°W SET NAIL & TAG 35998 IN SOUTH SIDE OF POWER POLE 77.06'
S79°W SET NAIL & TAG 35998 IN SOUTH SIDE OF TWIN 24" ASH 275.16'
N77°W SET NAIL & TAG 35998 IN NE SIDE OF 30" COTTONWOOD 270.22'
S80°E 1" x 30" STEEL FROST PIN 4.65'



Signed by Alan L. Schepelman Date 11/17/98
Surveyor's Michigan License No. 35998



A. CONTINUED

FRED J.W. SOLL
 RLS 1090
 APRIL 12, 1929
 JUNE 28, 1929
 AUGUST 19, 1929

U.S. WITNESSES GONE. HOLCROFT'S BOTH WITNESS TREES ARE ALIVE AND THRIFTY. DUG ACCORDINGLY AND FOUND 1.7' BELOW ROAD SURFACE 3" FIRE CLAY MONUMENT IN GOOD CONDITION. CLOSE TO CORNER, NE'LY IS A 1" IRON WAGON AXLE. PROBABLY CENTERLINE OF ROAD WAS MARKED WITH THOSE AXLES. ACCEPTED MONUMENT AS SECTION POST. CHECKED BEARINGS TO HOLCROFT'S WITNESS TREE, FOUND THEM O.K.

18" MAPLE	NW	94.9'
10" BURR OAK	NORTH	64.5'
12" BURR OAK	NORTH	73.2'
12" ELM	SE	68.6'
15" BURR OAK	SE	36.1'
20" TWIN OAK	SOUTH	69.4'
18" ELM	SOUTH	95.8'
14" CHERRY	SW	142.5'

SURVEY &
 REMONUMENTATION

MAR 13 2000

SECTION

FRANCIS E. SPICER
 RLS 7877
 MAY, 1972

LCRC - L. 1, P. 161
 1" SOLID IRON IN MONUMENT BOX ACCEPTED AS CORNER.
 S05°W NAIL IN CENTERLINE TWIN 24" OAK 68.85'
 N50°E NAIL IN CENTERLINE MBT POLE 45.36'
 S70°W NAIL IN CENTERLINE CP/MBT POLE 83.64'

MAURICE M. CHAMBERS
 RLS 7861
 AUGUST 22, 1975

CERTIFICATE OF SURVEY, L. 897, P. 1239
 1" SOLID IRON IN MONUMENT BOX.
 S05°W NAIL IN CENTERLINE TWIN 24" OAK 68.85'
 N50°E NAIL IN CENTERLINE MBT POLE 45.36'
 S70°W NAIL IN CENTERLINE CP/MBT POLE 83.64'

RICHARD R. GUTEKUNST
 RLS 7863
 FEBRUARY 22, 1977

LCRC - L. 3, P. 108 -- FOUND 1" STEEL BAR IN MONUMENT BOX IN CENTERLINE OF COUNTY FARM ROAD.
 N10°±W 24" OAK 65.90'
 N05°±W 24" OAK 73.94'
 S55°±W FIRE HYDRANT 90.72'
 SOUTH DEL. OAK 68.84'
 S70°±E 20" OAK 177.58'
 NORTH BACK OF CURB 26.28'

ADDITIONAL WITNESSES IN PART "A"
 SWAMP OAK 11 N 5°±W 64.14'
 1½" x 4' BUGGY AXLE - SET FROM WIT. SEPT. 1924

HE HAS ALSO RECORDED A CERTIFICATE OF SURVEY IN LIBER 935, PAGE 902 USING THE SAME CORNER.

RANDY J. KOLHOUSE
 RLS 25854
 DECEMBER 21, 1990

CERTIFICATES OF SURVEY, L. 1343, P. 150 & 152
 SOLID IRON IN MONUMENT BOX.
 FACE OF CURB SOUTH 25.48'
 TAG 20" DOUBLE OAK SOUTH 68.82'
 FACE OF CURB NORTH 25.60'
 CENTERLINE OF HYDRANT S60°W 90.63'