

JACKSON COUNTY
APPROVED LAND CORNER
P.A. 345 of 1990

SURVEY &
REMONUMENTATION

Chairman Alan L. Scheppelman

EAST 1/4 POST, SECTION 20, BLACKMAN TOWNSHIP

Date Nov. 10, 1999

LAND CORNER RECORDATION CERTIFICATE

MAR 13 2000

Filing Requirement of Act 74, Mich. P.A. 1970

For corners in
JACKSON

SECTION

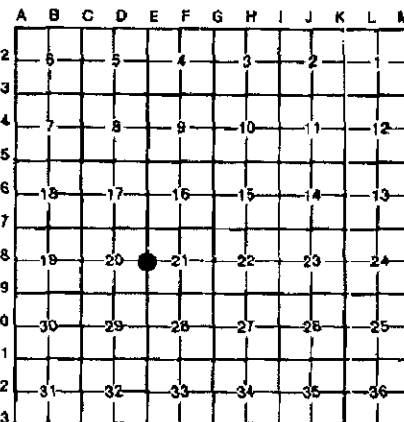
	Located In:		Corner Code #
(County)	2S	1W	E-8
1. Public Land Survey	T	R	
	T	R	
	T	R	
	T	R	
2. Property Controlling in Section	S	T	R
	S	T	R
3. Miscellaneous Property in Sec.	S	T	R
	S	T	R



2138091
Page: 1 of 2
11/24/1999 02:42P
L-1618 P-30

Register of Deeds Stamp & File Number

4. Lot No. _____, Recorded Plat _____
5. Private Claims _____



ALAN L. SCHEPPELMAN APRIL 9 99
I, _____, in a field survey on _____, 19_____, do hereby certify that under requirements of P.A. 74, Michigan P.A. of 1970, the corner points mentioned in lines 1 and 2 above were in conformance with regulations and rules therefore as required in the current manual of survey instructions of the United States Department of the Interior, Bureau of Land Management or by a decree of a Court of Law and/or that the corner points mentioned in lines 3, 4 and 5 above were in conformance with the rules of the Michigan Board of Land Surveyors or by a Decree of a Court of Law; established, re-established, monumented, re-monumented, recovered, found as expressed below:

NOTE: Not more than 4 corners, all in the same town and range, may be recorded on this certificate.

- A. Description of original monument and accessories and/or subsequent restoration:
- HERVEY PARKE, D.S. 40.00 SET QUARTER SECTION POST.
 - MARCH 7, 1825 WHITE OAK 16, S70°E 536 LINKS (353.76')
 - YELLOW OAK 24, N76½°W 438 LINKS (289.08')
 - JOHN HOLCROFT CORNER HAS BEEN KEPT UP.
 - NOVEMBER 18, 1886 POPLAR 6, N75½°E 312 LINKS (205.92')
 - ELM 5 BODIES, LARGEST BODY 3, N72½°W 15½ LINKS (10.23')
 - NO OTHER GOOD TREES NEAR

CONTINUED ON BACK

- B. Description of corner evidence found and/or method applied in restoring or reestablishing corner:

FOUND BOTTOM 5" OF FIRECLAY AT THE GROUND SURFACE WITH A 1" X 24" PIPE AND CAP "REG 7863" ON THE NORTH SIDE AND A 3/4" X 12" PIPE ON THE SOUTH SIDE. EXCAVATED IN STONE PILE TO A DEPTH OF 3'. THE ONLY OTHER EVIDENCE WAS A PIECE OF CLAY TILE AT THE BOTTOM OF THE EXCAVATION. I BELIEVE THAT THE FIRECLAY WAS DISTURBED AND ACCEPTED THE POSITION OF THE 1" PIPE TO THE NORTH AS THE BEST POSITION OF THE CORNER. REPLACED THE PIPE WITH A 4" X 36" CONCRETE JACKSON COUNTY MONUMENT AND BURIED THE FIRECLAY PIECE AND THE PIPES ON THE NORTH SIDE.

- C. Description of monument for corner and accessories established to perpetuate locating the position of the corner:

SET 4" X 36" CONCRETE MONUMENT WITH A 1/2" X 36" REBAR AND AN ALUMINUM JACKSON COUNTY REMONUMENTATION CAP STAMPED "LS NO. 35998 E-8 T2S R1W"

- N20°W FOUND NAIL & SHINER IN THE WEST OF A POWER POLE 50.35'
- WEST SET NAIL & TAG 35998 IN THE WEST SIDE OF A 6" CRAB APPLE 28.45'
- N53°E SET NAIL & TAG 35998 IN THE NW SIDE OF A 12" ELM 8.06'
- S73°E SET NAIL & TAG 35998 IN THE SOUTH SIDE OF A 10" POPLAR 42.92'
- S55°E SET NAIL & TAG 35998 IN THE SOUTH SIDE OF A 8" MAPLE 49.18'
- S13°E SET NAIL & TAG 35998 IN THE EAST SIDE OF 8" CHERRY 20.79'



Signed by Alan L. Scheppelman Date 11/08/99
Surveyor's Michigan License No. 35998



E-8, T2S, R1W

A. CONTINUED

JACKSON COUNTY
ROAD COMMISSION
UNDATED

ON FILE - FROM OLD CONSUMERS POWER NOTES
FOUND OLD STAKE. REPLACED IT WITH A STANDARD
CONSUMERS POWER COMPANY MARKER.

20" WHITE OAK N84°30'W 229'
16" B. OAK S47°45'W 192.7'

RICHARD E. GUTEKUNST
RLS 7863
MAY 10, 1983

CERTIFICATE OF SURVEY - LIBER 1044, PAGE 573
SHOWS CORNER ON SURVEY BUT NO DESCRIPTION OF
THE CORNER MONUMENT OR WITNESSES.

SURVEY &
REMONUMENTATION

MAR 13 2000

SECTION