

JACKSON COUNTY  
APPROVED LAND CORNER

P.A. 345 of 1990

Chairman *Dean R. Sullivan*

Date *Nov. 10, 1999*

EAST 1/4 POST, SECTION 9, BLACKMAN TOWNSHIP

LAND CORNER RECORDATION CERTIFICATE

Filing Requirement of Act 74, Mich. P.A. 1970

SURVEY & REMONUMENTATION

MAR 13 2000

SECTION

For corners in JACKSON

(County)

Located In:

Corner Code #

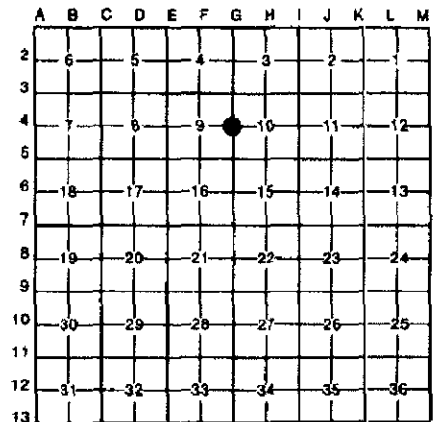
	2S	1W	G-4
1. Public Land Survey	T	R	
	T	R	
	T	R	
	T	R	
2. Property Controlling in Section	S	T	R
	S	T	R
3. Miscellaneous Property in Sec.	S	T	R
	S	T	R



2138092  
Page: 1 of 2  
11/24/1999 02:42  
L-1618 P-31

Register of Deeds Stamp & File Number

4. Lot No. \_\_\_\_\_, Recorded Plat \_\_\_\_\_  
5. Private Claims \_\_\_\_\_



ALAN L. SCHEPPELMAN JULY 30 99

I, \_\_\_\_\_, in a field survey on \_\_\_\_\_, 19\_\_\_\_\_, do hereby certify that under requirements of P.A. 74, Michigan P.A. of 1970, the corner points mentioned in lines 1 and 2 above were in conformance with regulations and rules therefore as required in the current manual of survey instructions of the United States Department of the Interior, Bureau of Land Management or by a decree of a Court of Law and/or that the corner points mentioned in lines 3, 4 and 5 above were in conformance with the rules of the Michigan Board of Land Surveyors or by a Decree of a Court of Law; established, re-established, monumented, re-monumented, recovered, found as expressed below:

NOTE: Not more than 4 corners, all in the same town and range, may be recorded on this certificate.

- A. Description of original monument and accessories and/or subsequent restoration:  
 HERVEY PARKE, D.S. 40.00 SET QUARTER SECTION POST.  
 MARCH 6, 1825 ELM 20, N86 1/2°E 43 LINKS (28.38')  
 ELM 20, N71 1/2°W 45 LINKS (29.70')  
 JOHN HOLCROFT FOUND STAKE AT CORNER SURROUNDED BY STONE  
 NOVEMBER 16, 1886 (WELL KEPT UP) PROVED IT BY TRANSIT LINE  
 HICKORY 6, S69°E 45-1/3 LINKS (29.92')  
 WILLOW 18, N64°W 137 LINKS (90.42')

CONTINUED ON BACK

- B. Description of corner evidence found and/or method applied in restoring or reestablishing corner:

FOUND FIRECLAY LEANING SLIGHTLY SOUTHWEST WITH 0.2' EXPOSED ABOVE GROUND AND A 1/2" X 2.3' PIPE ON THE SOUTH SIDE. THE CORNER IS IN REMNANTS OF AN EAST-WEST FENCE AND SMALL STONE ROW. THE FIRECLAY WAS BROKEN 0.7' FROM THE TOP WITH THE TOP SETTING DIRECTLY ON TOP OF THE BOTTOM 1.3'. ACCEPTED THE POSITION OF BOTTOM PART OF THE FIRECLAY AS A CAREFUL AND FAITHFUL PERPETUATION OF THE POSITION OF THE ORIGINAL CORNER. THE TOP WAS 0.18' SOUTHWEST OF THE BOTTOM POSITION. REPLACED THE FIRECLAY WITH A 4" X 36" CONCRETE JACKSON COUNTY MONUMENT AND BURIED THE FIRECLAY PIECES AND THE PIPE ON THE NORTH SIDE.



- C. Description of monument for corner and accessories established to perpetuate locating the position of the corner:

SET 4" X 36" CONCRETE MONUMENT WITH A 1/2" X 36" REBAR AND AN ALUMINUM JACKSON COUNTY REMONUMENTATION CAP STAMPED "LS NO. 35998 G-4 T2S R1W"  
 S15°W SET NAIL & TAG 35998 IN THE EAST SIDE OF A 6" OAK 29.23'  
 S53°W SET NAIL & TAG 35998 IN THE EAST SIDE OF A 6" OAK 22.29'  
 S88°W SET NAIL & TAG 35998 IN THE NORTH SIDE OF A 18" ASH 11.35' (CCW)  
 N12°E SET NAIL & TAG 35998 IN THE EAST SIDE OF A 12" ASH 15.23'  
 N47°E SET NAIL & TAG 35998 IN THE SE SIDE OF A 12" OAK 35.62'  
 S85°E FOUND 60D NAIL IN THE SOUTH SIDE OF A 20" HICKORY 40.61' (CCW)  
 S78°E FOUND 60D NAIL IN THE NORTH SIDE OF A 40" OAK STUMP 26.04' (CCW)  
 NORTH SURVEY MARKER SIGN POST 1.9'

Signed by *Alan L. Schepelman* Date 11/08/99  
 Surveyor's Michigan License No. 35998



G-4, T2S, R1W

A. CONTINUED

JACKSON COUNTY  
ROAD COMMISSION  
UNDATED

ON FILE  
FIRECLAY POST IN LINE WITH EAST AND WEST FENCE.  
8" CHERRY N35°W 34.30'  
10" HICKORY N40°E 31.15'  
30" TRIPLE OAK N53°E 48.18'

CHARLES C. WILSON  
RLS 13604  
FEBRUARY 7, 1978

L.C.R.C. - LIBER 3, PAGE 125  
FIRECLAY WITH 1/2" IRON PIPE AT SOUTH SIDE  
IN LINE WITH EAST AND WEST FENCE.  
50" OAK S60°E 26.7'  
8" ASH N30°W 11.2'  
20" HICKORY EASTERLY 40.5'

THE SAME INFORMATION IS ON A CERTIFICATE OF SURVEY  
RECORDED IN LIBER 943, PAGE 1093

SURVEY &  
REMONUMENTATION

MAR 13 2000

SECTION