

**JACKSON COUNTY
APPROVED LAND CORNER
P.A. 345 of 1990**

**NORTHEAST CORNER, SECTION 34
City of Jackson**

Chairman [Signature]
Date Dec. 21, 1998

**LAND CORNER RECORDATION CERTIFICATE
Filing Requirement of Act 74, Mich. P.A. 1970**

For corners in
JACKSON

(County)	Located In:	Corner Code #
1. Public Land Survey	T <u>2</u> S R <u>1</u> W	<u>I-11</u>
	T _____ R _____	
	T _____ R _____	
	T _____ R _____	
2. Property Controlling in Section	S _____ T _____ R _____	
	S _____ T _____ R _____	
3. Miscellaneous Property in Sec.	S _____ T _____ R _____	
	S _____ T _____ R _____	

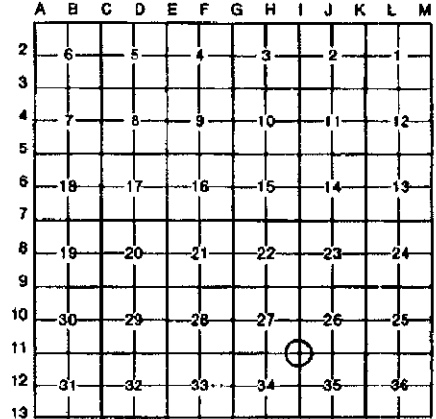


2099417
Page: 1 of 2
12/23/1998 11:24A
L-1589 P-649

Register of Deeds Stamp & File Number

- 4. Lot No. _____, Recorded Plat _____
- 5. Private Claims _____

I, DEAN R. GUTEKUNST, in a field survey on October 22, 19 97, do hereby certify that under requirements of P.A. 74, Michigan P.A. of 1970, the corner points mentioned in lines 1 and 2 above were in conformance with regulations and rules therefore as required in the current manual of survey instructions of the United States Department of the Interior, Bureau of Land Management or by a decree of a Court of Law and/or that the corner points mentioned in lines 3, 4 and 5 above were in conformance with the rules of the Michigan Board of Land Surveyors or by a Decree of a Court of Law, established, re-established, monumented, re-monumented, recovered, found as expressed below:



NOTE: Not more than 4 corners, all in the same town and range, may be recorded on this certificate.

A. Description of original monument and accessories and/or subsequent restoration:
Original Government Post set by Hervey Parke, Deputy Surveyor, 1825.
Y. Oak 5" S 38 1/2 E 39 links (25.74')
W. Oak 14" N 34 W 288 links (190.08')
Perpetuation by B. F. LaRue, no date, no description.
Southeast corner of house N W 84 1/2 links (55.77')
Northeast corner of house S W 103 links (67.98')
Northwest corner of small store S 87 3/4 (?) E 56 links (36.96')



Continued on back,

B. Description of corner evidence found and/or method applied in restoring or reestablishing corner:
Found an empty monument box 1.5' East of witness location.
Excavated through 3" of blacktop and 4" of brick and found a 1/2" rod, in a railroad tie or log, at witness location. Excavated through 6" of concrete at 1.65' below surface, and found no additional evidence of corner.
Corner is approximately 2' West of center line of blacktop.
Accepted 1/2" rod as the best available evidence of the position of the original corner.
Set a Standard Jackson County Monument to replace the 1/2" rod.

C. Description of monument for corner and accessories established to perpetuate locating the position of the corner:
I-11 T2S, R1W Corner is a 4" diameter X 30" Cast Iron Harrison monument with a Brass cap stamped LS 18658, which is a standard monument for Jackson County..
* N 80 W Southeast corner foundation of house #1108 60.79'
S 15 W Utility Pole 68.28' Found 60d on West side.
** N 80 E Southwest corner of Brick house #1109 80 36'
S 30 E 31" Maple 64.76' Pole barn spike and washer on Southwest side.

Monument box set by Michigan Department of Transportation in paving Cooper Street.

Signed by [Signature] Date December 18, 1998
Surveyor's Michigan License No. 18658

Continued,

A.) - Perpetuation, no name, dated November 1, 1904. 1" iron, driven down by trackmen.

Northwest	Hitch post	33.15'
West	Telephone pole	20.72'
West	West edge of concrete walk	30.33'
Southwest	Vertical edge of walk	49.98'

- P. A. -- 74, recorded by Nelson C. Jones, RLS #2934, Michigan Department of State Highways, dated November 16, 1971, in LCRC, Liber 1, Page 7, Jackson County Records

Obtained old witness information from Richard E. Gutekunst, RLS in Jackson, Michigan.

Records indicated that a 1/2" bolt with ring was set 35.05' East of corner at 2' South of 8" Elm.

Found said bolt under root of dead 36" Elm stump and set corner at indicated distance.

1/2" copperweld rod in monument box in center line of Cooper Street.

*	N 80 W	60.75'	Southeast corner foundation of house # 1108.
	S 60 W	68.37'	Northeast corner foundation of house # 1104.
	S 55 E	60.72'	Northwest corner porch, house # 1105.

- Perpetuation by Richard E., Gutekunst, RLS #7863, dated March 27, 1974.

Found 1/2" rod in monument box in blacktop.

	Southwest to Northeast corner Stone foundation of house # 1104	68.38'
*	Northwest to Southeast corner block foundation of house # 1108	60.73'
**	Northeast to Southwest corner of Brick house # 1109	80.4'



Mindy Reilly - Jackson Co.

CORREM

2099417
 Page: 2 of 2
 12/23/1998 11:24A
 L-1589 P-649