

STATE OF MICHIGAN
DEPARTMENT
OF
NATURAL RESOURCES

LAND CORNER RECORD

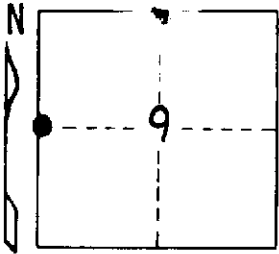
E-4 JACKSON COUNTY
T 25 R ~~24~~ 25

DESCRIPTION OF CORNER W. 1/4 CORNER SECTION 9

CORNER MONUMENT FOUND STONE MONUMENT 2.0' BELOW RD. GRADE SET 3/4" x 24" I.P.

DATE MONUMENT PLACED AND WITNESSED MARCH 7, 1970 ON TOP OF STONE

WITNESSES TO CORNER..... N 45° W 44.93' 44" W. OAK



S 32° W 69.48' 23" HICKORY

S 62° E 21.19' TELEPHONE POLE

AND
N 21° E 70.69' 38" OAK

CIRCLE CORNER REGISTERED

N 26° W 66.96' 26" OAK

DESCRIPTION IN DETAIL AS TO HOW CORNER WAS LOCATED AND IDENTIFIED OR RESTORED.

SURVEYOR'S SEAL

DISTRIBUTION: SIGNED _____ DATE _____
REGISTERED LAND SURVEYOR

County Courthouse
Area Forester (Regions I & II)
District or Region Surveyor
Forestry Div., Lansing

R 4047
Rev. 10/68