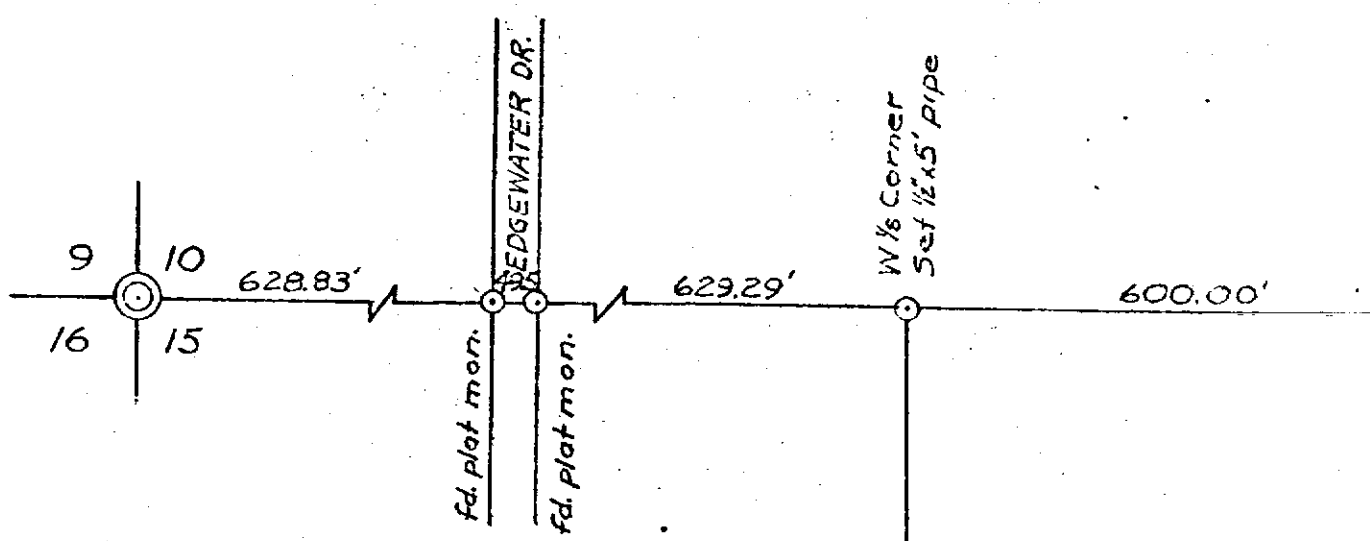


T35, R1E



WITNESSES

W 1/8 cor. Sec. 15, T35, R1E, 1/8 cor #1  
 S82°E, 47.52', 13" Maple, spike  
 S35°W, 32.60', 9" Oak, spike

NE cor. property  
 S52°W, 6.37', 7" Oak, spike  
 S26°E, 20.81', triple 12" Oak, spike

SE cor. property  
 N5°W, 10.85', twin 10" Oak, spike  
 S46°W, 9.97', quad 5" to 8" Oak, spike

N 1/4 cor. Sec. 15, T35, R1E  
 N51°E, 389.93', 46" Oak, spike & tag  
 N14°W, 304.19', triple 10" Cherry, spike & tag  
 N16°E, 596.5', 36" Elm (now stump) } 1925 witnesses  
 S82°30'E, 504.15', 24" Oak (now 36") }

STATE  
 16.9 Acres

