

Chairman *Alan L. Scheppelman*
 Date Oct. 15, 1997

SOUTHEAST CORNER, SECTION 15, NAPOLEON TOWNSHIP

LAND CORNER RECORDATION CERTIFICATE
 Filing Requirement of Act 74, Mich. P.A. 1970

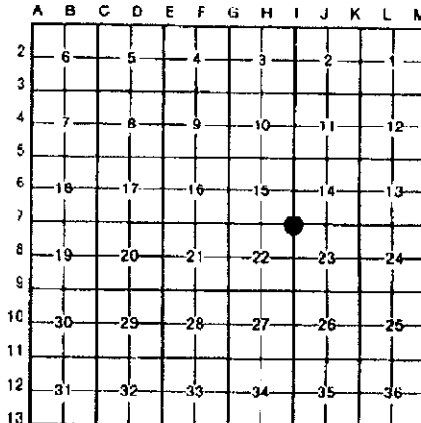
#2061269
 Liber 1561 Page 543
 Page 1 of 2
 Jackson Co., MI
 Recorded
 02/11/1998 10:29A
 Minds Reilly
 Register of Deeds

For corners in
 Jackson

(County)	Located In:	Corner Code #/
1. Public Land Survey	T <u>3S</u> R <u>1E</u>	I-7
	T _____ R _____	
	T _____ R _____	
	T _____ R _____	
2. Property Controlling in Section	S _____ T _____ R _____	
	S _____ T _____ R _____	
3. Miscellaneous Property in Sec.	S _____ T _____ R _____	
	S _____ T _____ R _____	

SURVEY & REMONUMENTATION
 SEP 16 1998
 SECTION

4. Lot No. _____, Recorded Plat _____
 5. Private Claims _____



Alan L. Scheppelman in a field survey on April 28 1997
 do hereby certify that under requirements of P.A. 74, Michigan P.A. of 1970, the corner points mentioned in lines 1 and 2 above were in conformance with regulations and rules therefore as required in the current manual of survey instructions of the United States Department of the Interior, Bureau of Land Management or by a decree of a Court of Law and/or that the corner points mentioned in lines 3, 4 and 5 above were in conformance with the rules of the Michigan Board of Land Surveyors or by a Decree of a Court of Law; established, re-established, monumented, re-monumented, recovered, found as expressed below:

NOTE: Not more than 4 corners, all in the same town and range, may be recorded on this certificate.

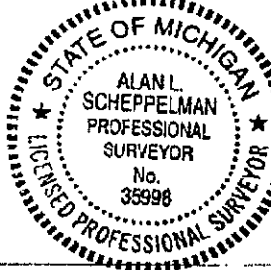
- A. Description of original monument and accessories and/or subsequent restoration:
 HERVEY PARKE, D.S. 80.00 SET POST CORNER - SECTIONS 14, 15, 22, 23
 FEBRUARY 6, 1825 MAPLE 18, S2½E 213 LINKS (140.58')
 TAMARACK 10, N3W 165 LINKS (108.90')
 HENRY F. BEAN FOUND REMAINS OF BOTH GOVERNMENT WITNESSES.
 UNDATED DROVE STAKE THROUGH ICE IN POND. ALSO STAKE
 IN LINE 212½ LINKS (140.25') SOUTH OF CORNER.
 W. OAK 20, S55°W 280½ LINKS (184.97')
 LEANING W. OAK 16, S1 3/4°W 210½ LINKS (138.93')

CONTINUED ON BACK

B. Description of corner evidence found and/or method applied in restoring or reestablishing corner:
 SEARCHED THROUGH ICE AND ON SOUTH BANK FOR THE STAKES BUT DID NOT FIND ANY EVIDENCE OF THE CORNER. ESTABLISHED THIS CORNER BY DOUBLE PROPORTION FROM THE 1/4 POSTS. SET A WITNESS CORNER TO THE SOUTH ON THE SECTION LINE AT BEAN'S RECORD DISTANCE. NO CORNER WAS SET IN THE WATER. THE WITNESS CORNER SETS ON THE SOUTH TOP OF BANK AND IS 8' WEST OF THE REMNANTS OF AN OLD FENCE TO THE SOUTH.

SEE SKETCH ON BACK.

- C. Description of monument for corner and accessories established to perpetuate locating the position of the corner:
 NO CORNER SET IN WATER
 WITNESS CORNER - 140.25' SOUTH - 4" X 36" CONCRETE MONUMENT WITH 1/2" X 36" REBAR AND JACKSON COUNTY REMONUMENTATION CAP STAMPED "W.C. I-7 T3S R1E LS NO. 35998".
 S70°E SET NAIL & TAG 35998 IN NORTH SIDE OF 18" OAK 18.91'
 N45°W SET NAIL & TAG 35998 IN SOUTH SIDE OF 16" OAK 23.49'
 S65°W SET NAIL & TAG 35998 IN NW SIDE OF 20" OAK 39.62'
 SOUTH SET NAIL & TAG 35998 IN WEST SIDE OF 16" OAK 42.53'
 NORTH SOUTH EDGE OF WATER 18'



Signed by *Alan L. Scheppelman*
 Surveyor's Michigan License No. 35998

Date 10/08/97

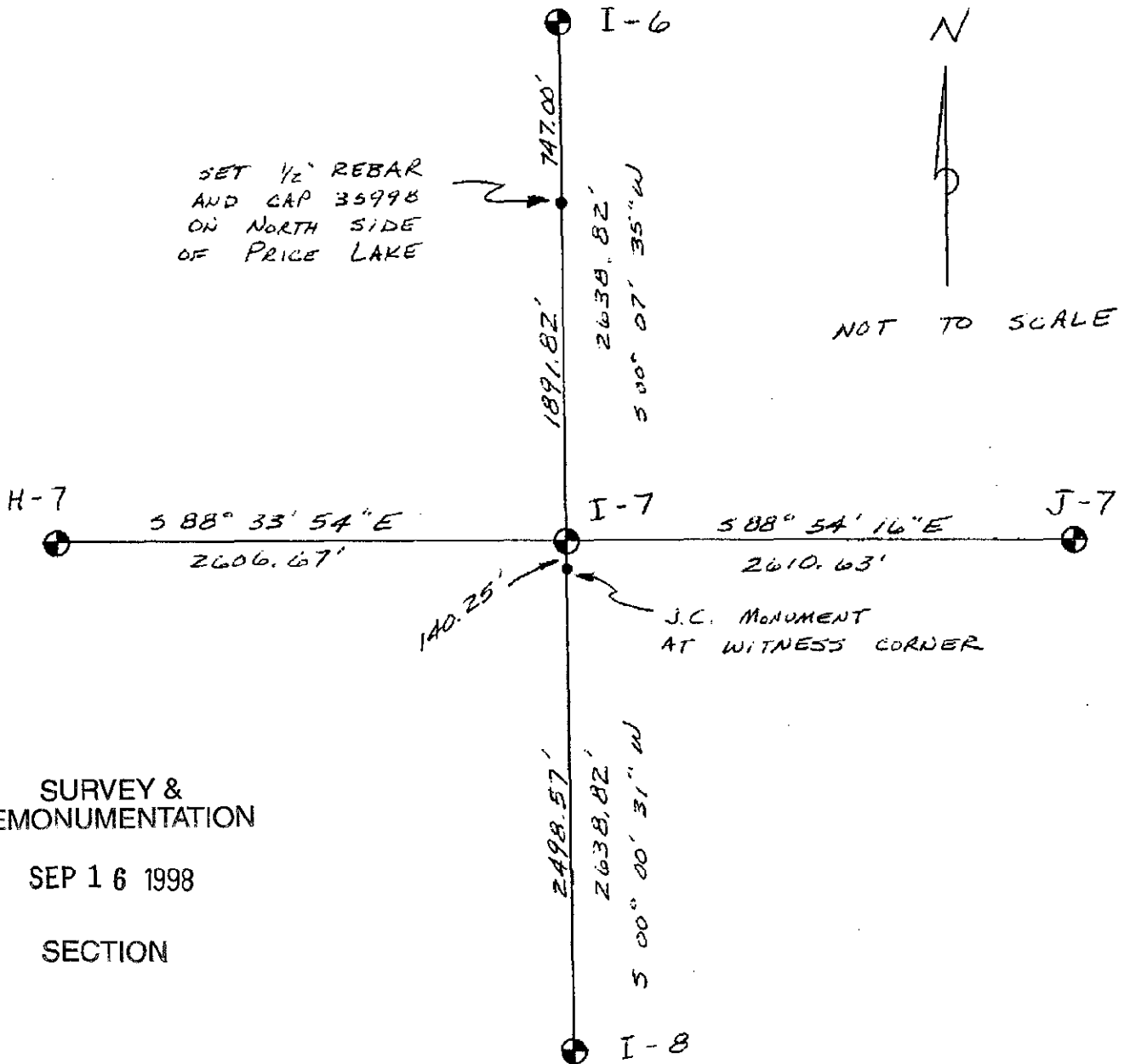
I-7, T3S, R1E, NAPOLEON TOWNSHIP

PAGE 2

A. CONTINUED

ALAN L. SCHEPPELMAN
PS 35998
JUNE 12, 1997

CERTIFICATE OF SURVEY - L. 1552, P. 1102
JACKSON COUNTY MONUMENT AT WITNESS CORNER
SAME WITNESSES AS IN PART "C" OF THIS FORM



SURVEY &
REMONUMENTATION

SEP 16 1998

SECTION