

**JACKSON COUNTY
APPROVED LAND CORNER**

P.A. 343 of 1990

Chairman *[Signature]*

Date July 9, 1999

NORTHEAST CORNER, SECTION 17, SUMMIT TOWNSHIP

LAND CORNER RECORDATION CERTIFICATE

Filing Requirement of Act 74, Mich. P.A. 1970

**SURVEY &
MONUMENTATION**

MAR 18 2000

For corners in

JACKSON

(County)

Located In:

Corner Code #

1. Public Land Survey

T 3S R 1W
T R
T R
T R

E-5

2. Property Controlling in Section

S T R
S T R

3. Miscellaneous

S T R

Property in Sec.

S T R



Mindy Reilly - Jackson Co.

CORREM

2126321

Page: 1 of 2

06/11/1999 10:56A

L-1600 P-420

Register of Deeds Stamp & File Number

4. Lot No. _____, Recorded Plat _____

5. Private Claims _____

ALAN L. SCHEPPELMAN

JULY 14

98

I, _____, in a field survey on _____, 19____, do hereby certify that under requirements of P.A. 74, Michigan P.A. of 1970, the corner points mentioned in lines 1 and 2 above were in conformance with regulations and rules therefore as required in the current manual of survey instructions of the United States Department of the Interior, Bureau of Land Management or by a decree of a Court of Law and/or that the corner points mentioned in lines 3, 4 and 5 above were in conformance with the rules of the Michigan Board of Land Surveyors or by a Decree of a Court of Law; established, re-established, monumented, re-monumented, recovered, found as expressed below:

NOTE: Not more than 4 corners, all in the same town and range, may be recorded on this certificate.

A. Description of original monument and accessories and/or subsequent restoration:

HERVEY PARKE, D.S. 80.00 SET POST CORNER - SECTIONS 8, 9, 16, & 17
FEBRUARY 24, 1825 W. OAK 28, S26°W 261 LINKS (172.26')
HICKORY 12, N54°E 75½ LINKS (49.83')

HENRY F. BEAN STONE CORNER, FOUND REMAINS OF WITNESSES, SET
OCTOBER 6, 1886 FIRECLAY POST 2 RODS WEST OF CORNER.
ELM 22, S80°W 452 LINKS (298.32')
ELM 22, S02°E 70 LINKS (46.20')

CONTINUED ON BACK

B. Description of corner evidence found and/or method applied in restoring or reestablishing corner:

FOUND 3/4" PIPE WITH AN UNREADABLE CAP AT THE CORNER. EXCAVATED AND FOUND A 2" X 36" PIPE DIRECTLY BELOW THE FIRST PIPE. THE OFFSET FIRECLAY SET BY BEAN WAS NOT FOUND BECAUSE IT SHOULD BE UNDER A LARGE BUSH. A SIMILAR 2" PIPE WAS ALSO FOUND AT THE 1/16TH CORNER TO THE WEST AT THE SOUTHWEST CORNER OF "AMBS WESTGATE SUBDIVISION". SAID SUBDIVISION WAS DONE BY FRED C. RILEY, RLS 377 IN 1955. ACCEPTED THE 2" PIPE AS A CAREFUL AND FAITHFUL PERPETUATION OF THE POSITION OF THE ORIGINAL CORNER. ON JULY 24, 1998, SET A 4" x 36" CONCRETE MONUMENT AND BURIED BOTH PIPES ON THE SOUTH SIDE.

C. Description of monument for corner and accessories established to perpetuate locating the position of the corner:

4" X 36" CONCRETE MONUMENT WITH 1/2" X 36" REBAR AND ALUMINUM JACKSON COUNTY REMONUMENTATION CAP STAMPED "E-5 T3S R1W LS NO. 35998".
N80°W SET NAIL & TAG 35998 IN THE NORTH SIDE OF A 32" MAPLE 26.39'
N20°W SET NAIL & TAG 35998 IN THE EAST SIDE OF A 32" MAPLE 52.13'
N40°E SET NAIL & TAG 35998 IN THE SE SIDE OF A QUAD. 12" MAPLE 13.39'
S65°E SET NAIL & TAG 35998 IN THE NORTH SIDE OF A 52" OAK 69.99'
S10°E NW CORNER OF FOUNDATION TO HOUSE #2417 87.11'
WEST SURVEY MARKER SIGN POST 11.5'

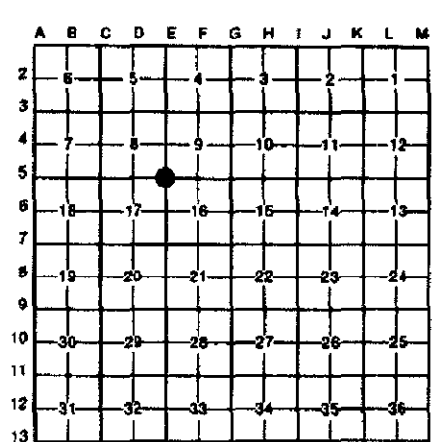
Signed by *[Signature]*

Date

06/06/99

Surveyor's Michigan License No. _____

35998





E-5, T3S, R1W

PAGE 2

A. CONTINUED

JACKSON COUNTY
 ROAD COMMISSION

RECORDS ON FILE

F. FISHER - 4/25/46 -- LARGE ROCK SUNK IN GROUND.
 36.9' S.W. OF 3' ELM
 26.3' EAST OF 10" MAPLE
 64.4' NORTH OF 2.4' ELM
 STONE IN ROOT OF ELM S.W. 34.9

ADDITIONAL WITNESSES FROM C.P. CO.

36" ELM N.E. 36.9'
 27" ELM S. 64.4'
 10" MAPLE W. 26.3'

SURVEY &
 REMONUMENTATION

MAR 13 2000

SECTION

TIMOTHY B. VANGIESON
 RLS 24621
 JULY 22, 1992

UNRECORDED CERTIFICATE OF SURVEY SHOWS THE
 CORNER TO BE A 3/4" PIPE.

60-D IN POWER POLE	N20°E	55.25'
60-D IN 48" OAK	S70°E	70.09'
60-D IN 24" MAPLE	S90°W	26.25'
60-D IN 24" MAPLE	N20°W	51.95'

NOTE: NUMEROUS PLATS ARE TIED TO THIS CORNER BUT NONE DESCRIBE THE CORNER.