

JACKSON COUNTY
APPROVED LAND CORNER
P.A. 340 of 1990

WEST 1/4 POST, SECTION 10
CITY OF JACKSON

SURVEY &
REMONUMENTATION

MAR 1 8 2000

Chairman Dean R. Gutekunst
Date Feb 10, 1999

LAND CORNER RECORDATION CERTIFICATE
Filing Requirement of Act 74, Mich. P.A. 1970

SECTION

For corners in

JACKSON
(County)

Located In:

Corner Code #

1. Public Land Survey

T 3 S R 1 W

G-4

2. Property Controlling
in Section

S T R
S T R

3. Miscellaneous
Property in Sec.

S T R
S T R



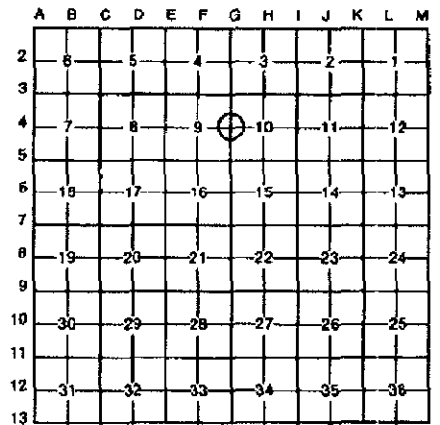
Mindy Reilly - Jackson Co.

CORREM

2104925
Page: 1 of 2
02/16/1999 10:34A
L-1593 P-703

Register of Deeds Stamp & File Number

4. Lot No. _____, Recorded Plat _____
5. Private Claims _____



June 2, 1998 &

I, DEAN R. GUTEKUNST, in a field survey on July 29, 19 98

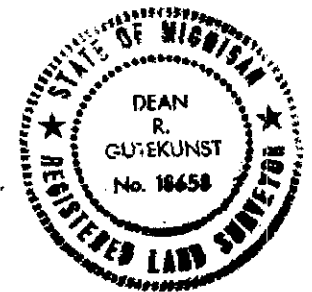
do hereby certify that under requirements of P.A. 74, Michigan P.A. of 1970, the corner points mentioned in lines 1 and 2 above were in conformance with regulations and rules therefore as required in the current manual of survey instructions of the United States Department of the Interior, Bureau of Land Management or by a decree of a Court of Law and/or that the corner points mentioned in lines 3, 4 and 5 above were in conformance with the rules of the Michigan Board of Land Surveyors or by a Decree of a Court of Law; established, re-established, monumented, re-monumented, recovered, found as expressed below:

NOTE: Not more than 4 corners, all in the same town and range, may be recorded on this certificate.

A. Description of original monument and accessories and/or subsequent restoration:

- Original Government Post set by Hervey Parke, Deputy Surveyor, 1825.
- W. Oak 24" S 20 W 57 links (37.62')
- Y. Oak 26" N 61 W 31 links (20.46')
- Perpetuation by M. S. Cook, no date.
- * Y. Oak 16" S 84 E 8 links (5.28')
- W. Oak 12" N 65 W 5 links (3.3')

Continued on back,



B. Description of corner evidence found and/or method applied in restoring or reestablishing corner:

By June 2, 1998, blacktop pavement and surface iron had been excavated away for street re-construction.
Excavated and found a 1 1/2" X 48 solid iron bar, which was surrounded by stones and sandstone.
Corner is approximately on center line of pavement (South West Avenue).
Accepted the solid iron bar as a careful and faithful perpetuation of the position of the original corner, as remonumented by Bean in 1886 and Riley in 1925.
Set a Standard Jackson County Monument to replace the iron bar and placed stones and broken concrete below monument.

C. Description of monument for corner and accessories established to perpetuate locating the position of the corner:

- G-4 T3S, R1W Corner is a 4" diameter Cast Iron Harrison monument with a Brass cap stamped LS 18658, which is a standard monument for Jackson County.
- N 45° W Northeast corner brick house #1930 82.12'
 - S 45° W Southeast corner brick foundation house # 1932 84.70'
 - N 75° W Fire Hydrant (top center) 22.95'
 - N 80° E Utility Pole 20.80' Pole barn spike and washer on North side.
 - S 70° E 12" Locust 24.00' Found nail & tag #35998 on South side.
 - S 25° E 15" Locust 52.35' Found nail & tag #35998 on West side.
 - N 40° E 15" Locust 36.12' Found nail & tag #35998 on Northwest side.
 - S 40° W 25" Locust 31.12' Found 60d on Northwest side.

Monument box set over monument.

Signed by Dean R. Gutekunst

Date February 1, 1999

Surveyor's Michigan License No. 18658

MAR 13 2000

Continued,

- A.) - Perpetuation by H. F. Bean, 1886. SECTION
 * Y. Oak 18" S 82 E 8 links (5.28') Iron post and two witnesses
 Hickory 14" N 87 $\frac{1}{4}$ W 72 $\frac{1}{2}$ links (47.85') standing, did not set fireclay
 post here.
- Perpetuation by J. C. Riley, May 9, 1925 Reset 1 $\frac{1}{4}$ " X 5' shaft
 Hickory N 87 $\frac{1}{4}$ W 67.2'
 To face of curb East 13.19'
 Southwest to Southeast corner brick foundation of house 84.85'
- Perpetuation by Richard E. Gutekunst, RLS #7863, dated 9/14/1973.
 Set capped iron in blacktop (West Avenue) from plat of Essex Heights #3.
- | | | |
|----------|-----------------------------------------------|--------|
| N 45 W | Northeast corner brick foundation house #1930 | 81.76' |
| S 45 W | Southeast corner brick foundation house #1932 | 84.52' |
| Easterly | Telephone pole | 19.22' |
| Westerly | Fire hydrant | 22.63' |
| East | Iron | 33.00' |
- P.A.-74, recorded by Ronald W. Keller, RLS #20707, dated 3/25/83 in
 LGRC, Liber 4, page 22, Jackson County Records.
- Found capped iron REG #7863 in center line of road north & south.
- | | | |
|--------|-----------------------------------------|--------|
| N 88 E | P. pole | 19.25' |
| N 75 W | Arrow on fire hydrant | 22.72' |
| S 82 W | Northeast corner house foundation #1932 | 67.93' |
| S 37 E | Northwest corner house foundation #1927 | 68.45' |



Mindy Reilly - Jackson Co.

CORREM

2104925

Page: 2 of 2
02/16/1999 10:34A

L-1593 P-703