

Chairman Alan L. Scheppelman EAST 1/4 CORNER, SECTION 3, CITY OF JACKSON

Date Dec. 13, 1995

LAND CORNER RECORDATION CERTIFICATE
 Filing Requirement of Act 74, Mich. P.A. 1970

LIBER 1501 PAGE 808

For corners in
Jackson
 (County)

Located In: Corner Code #

1. Public Land Survey T 3S R 1W I-2
 T R
 T R REMONUMENTATION
 T R

2. Property Controlling S T R
 in Section S T R FEB 22 1996

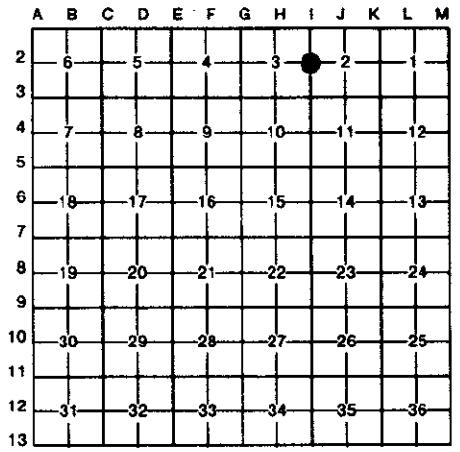
3. Miscellaneous S T R
 Property in Sec. S T R COMMISSION

4. Lot No. _____, Recorded Plat _____

5. Private Claims _____

STATE OF MICHIGAN
 JACKSON COUNTY
 RECORDED
 28 DEC 95 11:20 A.M.
 GERALD J. McDEVITT
 REGISTER OF DEEDS
 Register of Deeds Stamp & File Number

I, Alan L. Scheppelman, in a field survey on July 25, 19 95, do hereby certify that under requirements of P.A. 74, Michigan P.A. of 1970, the corner points mentioned in lines 1 and 2 above were in conformance with regulations and rules therefore as required in the current manual of survey instructions of the United States Department of the Interior, Bureau of Land Management or by a decree of a Court of Law and/or that the corner points mentioned in lines 3, 4 and 5 above were in conformance with the rules of the Michigan Board of Land Surveyors or by a Decree of a Court of Law; established, re-established, monumented, re-monumented, recovered, found as expressed below:



NOTE: Not more than 4 corners, all in the same town and range, may be recorded on this certificate.

- A. Description of original monument and accessories and/or subsequent restoration:
- HERVEY PARKE 40.00 SET GRANITE SECTION POST
 FEBRUARY 15, 1825 W. OAK 34, N75°W, 264 LINKS (174.24')
 W. OAK 36, S68°E, 24 LINKS (15.84')
 - TIM VAN GIESON FOUND 3/4" PIPE, 1.6' EAST OF CENTERLINE OF FRANCIS STREET
 LS #24621 AND 33' SOUTH OF CENTERLINE OF MORRELL STREET. RAISED TO
 SEPT. 1981 SURFACE WITH 1/2" STEEL ROD. 60d NAIL IN 40" OAK, N20°E, 73.64';
 UNRECORDED 60d NAIL IN UTILITY POLE, S15°W, 73.24'; NW CORNER FOUNDATION
 OF HOUSE #905, S30°E, 70.10'; NE CORNER FOUNDATION OF HOUSE #902,
 S45°W, 57.79'; 60d NAIL IN 24" OAK, N80°W, 60.12'; TOP SE BOLT
 OF SHELL SIGN, N15°W, 74.47'.
- B. Description of corner evidence found and/or method applied in restoring or reestablishing corner:

THE TOP 12" OF THE ROAD WAS REMOVED DURING ROAD RECONSTRUCTION AND I AM NOT SURE OF WHAT WAS AT THE SURFACE. DURING THE EXCAVATION A 1" x 20" SOLID STEEL BAR WAS FOUND 1.3' BELOW PREVIOUS ROAD GRADE, AND ALSO BELOW THE OLD CONCRETE RAILROAD BED. EXCAVATED DOWN AND FOUND 7" x 8" x 11" GRANITE STONE DOWN 2.0' AND TO THE SOUTHEAST OF THE BAR. THE POSITION OF THE 3/4" BAR AGREES WITH TIM VAN GIESON'S REMAINING WITNESSES. ACCEPTED THE 3/4" BAR AS A CAREFUL AND FAITHFUL PERPETUATION OF THE POSITION OF THE ORIGINAL CORNER. SET A STANDARD JACKSON COUNTY MONUMENT IN ITS PLACE.

\$ 2.00 REMONUMENTATION
 \$ 7.00 CORNER REMONUMENTATION

C. Description of monument for corner and accessories established to perpetuate locating the position of the corner:

- 4" x 36" CONCRETE MONUMENT WITH JACKSON COUNTY REMONUMENTATION
 CAP STAMPED "I-2 T3S R1W LS NO. 35998".
- N20°W TOP-CENTER OF FIRE HYDRANT 70.26'
- N80°W P.K. IN SOUTH SIDE OF LIGHT POLE 37.67'
- N30°E FOUND 60d NAIL IN SE SIDE OF 32" OAK 73.84'
- S20°W FOUND 60d NAIL IN WEST SIDE OF POWER POLE 73.18'
- S40°W NAIL & TAG #35998 IN NW SIDE OF 8" MOUNTAIN ASH 32.90'
- S30°E NW CORNER OF FOUNDATION OF HOUSE #905 70.10'
- S45°W NE CORNER OF FOUNDATION OF HOUSE #902 57.79'



Signed by Alan L. Scheppelman Date 11/27/95
 Surveyor's Michigan License No. 35998