

# LAND CORNER RECORDATION CERTIFICATE

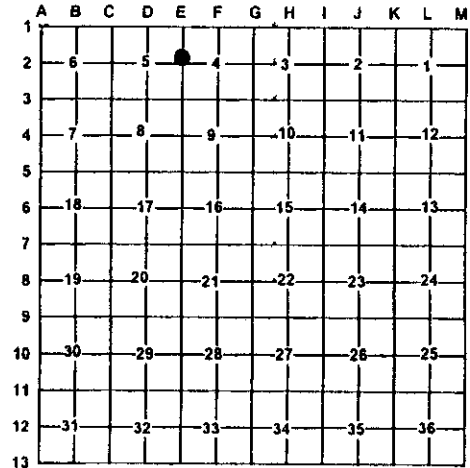
Filing Requirement of Act 74, Mich. PA 1970

For Corners In: <u>KALKASKA</u> (County)	Located In T <u>25N</u> R <u>R6W</u> T _____ R _____	Corner Code # Witness Corner To <u>E2</u> _____ _____ _____ _____
1. Public Land Survey	T <u>25N</u> R <u>R6W</u>	_____
2. Property Controlling in Section	S _____ T _____ R _____	_____
3. Miscellaneous Property in Section	S _____ T _____ R _____	_____
4. Lot No: _____	Recorded Plat: _____	
5. Private Claims: _____		

Register of Deeds Stamp & File Number

I, Craig W. McVean, in a field survey on June 23, 1998 do hereby state that under requirements of PA 74, Michigan PA of 1970, the corner points mentioned in lines 1 and 2 above were in conformance with regulations and rules therefore as required in the current manual of survey instructions of the United States Department of the Interior, Bureau of Land Management or by a decree of a Court of Law and/or that the corner points mentioned in lines 3, 4 and 5 above were in conformance with the rules of the Michigan Board of Land Surveyors or by a Decree of a Court of Law; established, re-established, monumented, recovered, found as expressed below:

**NOTE: Not more than 2 corners, all in the same town and range, may be recorded on this certificate.**



**A. Description of original monument and accessories and/or subsequent restoration:**

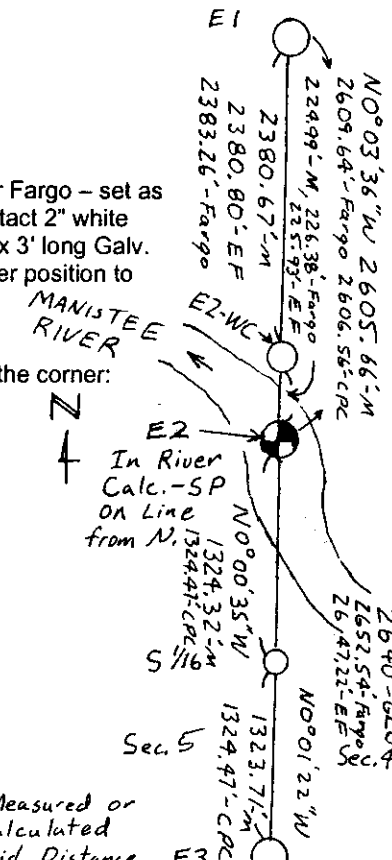
- E2-WC - GLO - Set Wit. Post 62 L. S. of True corner in Stream (Manistee River) & Leave swamp. Cedar 18" S50°W 30 L.
- Fargo - Set Iron Post with Crockery for W.C. 3.43 Ch. North of corner in River.
- Cedar stump 13" S12°E 101 1/2 L.
- W. Pine 24" N38°W 203 1/2 L.
- LCRC - L.2, P.01- Matthew McClung - 1974 - Set witness iron 8" w. Pine S38°34'W 27.60'
- 10" Cedar N51°26'W 13.88'
- Consumers P.C. - 1979 - Corner in River
- LCRC - L.2, P.433 - E. Farrier - 1991 - Corner falls in River.
- N0°35'46"W 225.95' to fnd. Fargo 3/4" Pipe
- N89°56'00"E on W-E 1/4 - Set 1/2" Rod & Cap. - 82.26'
- S0°31'53"E on Centerline 186.92' fnd. 1/2" Iron Rod & Cap #21265

**B. Description of corner evidence found and/or method applies in restoring or re-establishing corner:**

E2-WC - Witness corner to 1/4 corner common to Sec. 4 & 5, T25N, R6W. - Found 1" O.D. Iron Pipe per Fargo - set as witness corner. Removed Fargo's 1" O.D. x 2.3' long iron pipe with hooked end and found 1 intact 2" white Butter Dish & 9 broken pieces of white Crockery. Replaced Pipe with 4" DNR Alum. Cap on 1" x 3' long Galv. Iron Pipe with Ring of Stone. Placed Crockery at base of Mon. as memorial. GLO witness corner position to The S. of E2 now falls in the river.

**C. Description of monument for corner and accessories established to perpetuate locating the position of the corner:**

E2-WC - 4" DNR Alum. Cap on 1" x 3' long Galv. Iron Pipe with Ring of Stone  
 N69°E 70.94' to N&T in N. side of 16" R. Pine scribed 'WCBT'  
 S50°E 36.16' to N&T in SW. side 15" Cedar scribed 'WCBT'  
 S65°W 20.98' to N&T in SE. side 16" S. Maple scribed 'WCBT'  
 N72°W 26.98' to N&T in N. side 11" Tw. W. Pine scribed 'WCBT'  
 NE'ly Bank of Manistee river is S. 41' +/-'



Signed by: Craig W. McVean  
 Surveyor's Michigan License No.: 39088

Date: 10/19/2000