

# LAND CORNER RECORDATION CERTIFICATE

Filing Requirement of Act 74, Mich. PA 1970

For Corners In: Kalkaska Located In \_\_\_\_\_ Corner Code # \_\_\_\_\_  
(County)

1. Public Land Survey T 25N R 7W L8  
T \_\_\_\_\_ R \_\_\_\_\_

2. Property Controlling in Section S 24 T 25N R 7W CEW 1/64  
S \_\_\_\_\_ T \_\_\_\_\_ R \_\_\_\_\_

3. Miscellaneous Property in Section S \_\_\_\_\_ T \_\_\_\_\_ R \_\_\_\_\_  
S \_\_\_\_\_ T \_\_\_\_\_ R \_\_\_\_\_

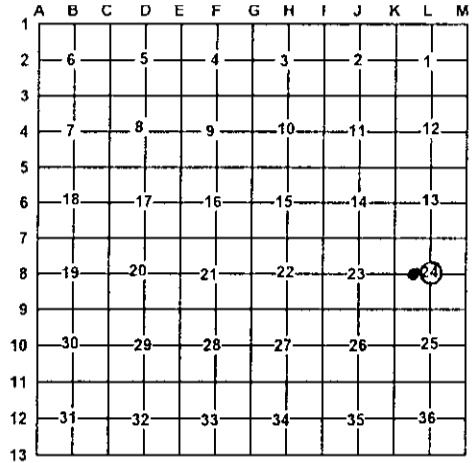
4. Lot No: \_\_\_\_\_ Recorded Plat: \_\_\_\_\_

5. Private Claims: \_\_\_\_\_

I, Craig W. McVean, in a field survey on March 23, 2004 do hereby state that under requirements of PA 74, Michigan PA of 1970, the corner points mentioned in lines 1 and 2 above were in conformance with regulations and rules therefore as required in the current manual of survey instructions of the United States Department of the Interior, Bureau of Land Management or by a decree of a Court of Law and/or that the corner points mentioned in lines 3, 4 and 5 above were in conformance with the rules of the Michigan Board of Land Surveyors or by a Decree of a Court of Law; established, re-established, monumented, recovered, found as expressed below:

**NOTE: Not more than 2 corners, all in the same town and range, may be recorded on this certificate.**

Register of Deeds Stamp & File Number



A. Description of original monument and accessories and/or subsequent restoration:  
L8 - Fargo Eng. - 1912 - Set iron post w/ broken crockery CEW 1/64 - None  
Y. Pine 16" S22°W 20.5 L.  
Y. Pine 12" S78½°W 119.5 L.

B. Description of corner evidence found and/or method applied in restoring or re-establishing corner:  
L8 - C ¼, Sec. 24 - Fd. ¾" x 2.5' long iron pipe w/ hooked end CEW 1/64 - being the NE Cor. of the W ½ of NE ¼ of SW ¼, Sec. 24 - Set 2" Alum. Cap on 5/8" x 34" iron rebar per standard BLM procedure.  
per Fargo Eng. Pipe is 0.95' N and 0.73' W of the calculated intersection of ¼ lines. Excavated ¾" pipe but no crockery found. Checked Fargo's witnesses as follows: S22°W 14' Fd. depression for site and measured S78°W 78.7' to fd. pine stub w/ axed notch. ¾" pipe accepted as the best available evidence of the position of the corner.

C. Description of monument for corner and accessories established to perpetuate locating the position of the corner:  
L8 - Replaced ¾" pipe w/ 3 ½" stamped "State of Michigan" Alum. CEW 1/64 - Stamped 2" Alum. Cap on 5/8" x 34" iron rebar.  
Cap on 1" x 36" Galv. iron pipe. Set blue carsonite post w/ loc tag 1' NW  
N64°E 31.01' to set N & T in NW side 8" W. Pine East 4.43' to set N & T in S. side 6" W. Pine  
N36°E 25.31' to set N & T in SE side 6" W. Pine S10°E 5.62' to set N & T in W. side 10" R. Pine  
N64°W 13.37' to set N & T in NW side 13" W. Pine  
S12°W 19.26' to set N & T in W. side 8" R. Pine N8°E 25.10' to set N & T in W. side 7" R. Pine  
Set blue carsonite post 1' NE

Signed by: Craig W. McVean Date: 8/3/2004  
Surveyor's Michigan License No.: 39088

