

LAND CORNER RECORDATION CERTIFICATE

Filing Requirement of Act 74, Mich. PA 1970

For Corners In:
Kalkaska Located In _____ Corner Code # _____
 (County)

1. Public Land Survey	T	26N	R	5W	J5	
	T		R			
2. Property Controlling in Section	S	T	R			
	S	T	R			
3. Miscellaneous Property in Section	S	T	R			
	S	T	R			

4. Lot No: _____ Recorded Plat: _____

5. Private Claims: _____

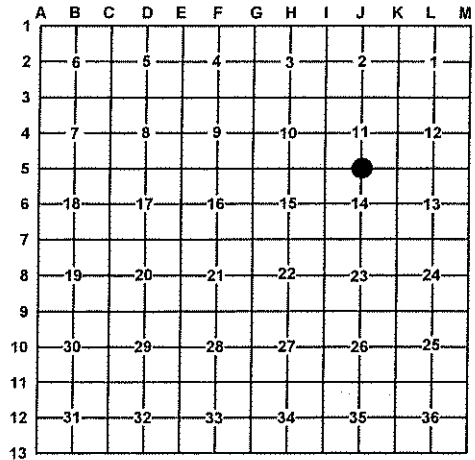
I, Joshua R. Davidson, in a field survey on July 10, 2013 do hereby state that under requirements of PA 74, Michigan PA of 1970, the corner points mentioned in lines 1 and 2 above were in conformance with regulations and rules therefore as required in the current manual of survey instructions of the United States Department of the Interior, Bureau of Land Management or by a decree of a Court of Law and/or that the corner points mentioned in lines 3, 4 and 5 above were in conformance with the rules of the Michigan Board of Land Surveyors or by a Decree of a Court of Law; established, re-established, monumented, recovered, found as expressed below:

NOTE: Not more than 2 corners, all in the same town and range, may be recorded on this certificate.

BK: 6

PG: 1033

Register of Deeds Stamp & File Number



A. Description of original monument and accessories and/or subsequent restoration:

J5 – ¼ corner common to sections 11 & 14, T26N, R5W

- 1852 – GLO Resurvey – G. Cannon – Set quarter section post. –
 1) SP. Pine 10" N80°E 19, 2) Sp. Pine 8" S75°W 34.
- 1911 – County Survey Record Section 11 – No corner description.
- 1957 – DNR corner record – B. Buckler, PS #8887 – This corner was established by proportionate measurement between section corners by forestry division survey crew while making a partial resurvey of this township. No evidence of government BT's. – 1" pipe with 4" brass cap – 3) 8" J. Pine S35°W 51links, 4) 8" J. Pine S66°E 23 links.
- 1978 – Consumer's Power Co. Survey drawing #S-F17406 – D. Ankrom, PS #21265 – Found conservation iron –
 5) 5" J. Pine N5°±E 33.03', 6) 14" R. Pine Stump N10°±W 11.96', 7) 6" twin Oak North 38.35', 3) 12" Pine Stump S30°±W 34.30'.

B. Description of corner evidence found and/or method applied in restoring or re-establishing corner:

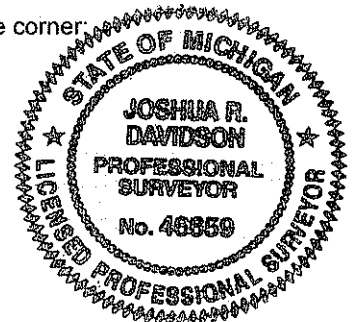
J5 – ¼ corner common to sections 11 & 14, T26N, R5W

Found 4" Department of Conservation (DOC) brass cap on 1" pipe leaning. Dug down at base of pipe and straightened and reset pipe at a plumb position. Found witnesses #5 & #7 in good condition and found stumps of witnesses #3, #4, & #6. No GLO evidence was found. **DOC Monument accepted as a careful and faithful reestablishment of the position of the original corner.**

C. Description of monument for corner and accessories established to perpetuate locating the position of the corner:

J5 – 4" Department of Conservation brass cap on 1" pipe. – Set Blue post 1' North.

- N05°E 38.80' to set nail & tag at fd. nail in E. side 10" twin Oak (#7)
- N17°E 33.42' to set nail & tag in E. side 12" J. Pine (#5)
- N82°E 26.68' to set nail & tag in S. side 6" J. Pine
- S32°E 48.99' to set nail & tag in SW. side 6" J. Pine
- S82°W 35.03' to set nail & tag in N. side 8" J. Pine



Signed by: Joshua R. Davidson
 Surveyor's Michigan License No.: 46659

Date: DEC. 16, 2014