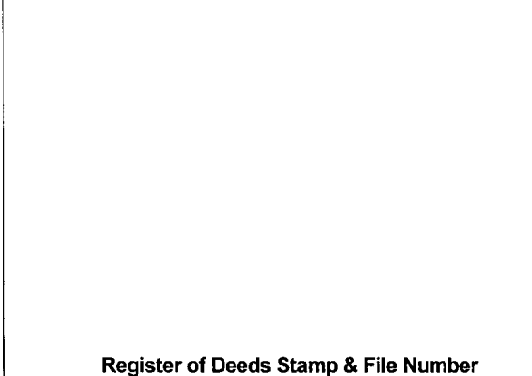


LAND CORNER RECORDATION CERTIFICATE

Filing Requirement of Act 74, Mich. PA 1970

For Corners In:

Kalkaska (County)		Located In		Corner Code #	
1. Public Land Survey	T	<u>26N</u>	R	<u>6W</u>	<u>M8</u>
	T	<u>26N</u>	R	<u>5W</u>	<u>A8</u>
2. Property Controlling in Section	S	_____	R	_____	_____
	S	_____	R	_____	_____
3. Miscellaneous Property in Section	S	_____	R	_____	_____
	S	_____	R	_____	_____

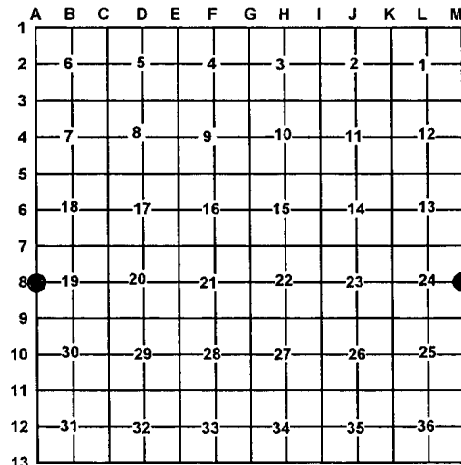


4. Lot No: _____ Recorded Plat: _____

5. Private Claims: _____

I, Craig W. McVean, in a field survey on Feb. 14, 2009 do hereby state that under requirements of PA 74, Michigan PA of 1970, the corner points mentioned in lines 1 and 2 above were in conformance with regulations and rules therefore as required in the current manual of survey instructions of the United States Department of the Interior, Bureau of Land Management or by a decree of a Court of Law and/or that the corner points mentioned in lines 3, 4 and 5 above were in conformance with the rules of the Michigan Board of Land Surveyors or by a Decree of a Court of Law; established, re-established, monumented, recovered, found as expressed below:

NOTE: Not more than 2 corners, all in the same town and range, may be recorded on this certificate.



A. Description of original monument and accessories and/or subsequent restoration:

M8-A8 – 1839 – GLO – J. H. Mullett – Set ¼ Post

- 1) Birch 16" S81°W 14 L.
- 2) Birch 20" N51°W 40 L.
- 1913 – Fargo Eng. – No US evidence – Set temp. corner only
- 1975 – LCRC #363-A; H. L. Fluharty
Set 5/8" x 18" rerod with RLS cap – Equal distance on line;
- 3) 5" Tw. Poplar N45°W 41.56'; 4) 6" Cherry S22°W 60.97';
- 5) 4" Poplar S50°E 67.48'
- 2000 – Farrier Surveying notes – Set 5/8" x 24" rebar MPOL.
- 6) Set nail South 54.55' – 10" Cherry

- 7) Set nail N50°W 43.50' – 3" Cherry
- 8) Set nail N22°E 13.81' – 10" Cherry
- 9) N82°31'27"E 18.44' – 5/8" rod and cap #18223.
Distance N & S is 2627.37'

B. Description of corner evidence found and/or method applied in restoring or re-establishing corner:

M8 – A8 – Standard ¼ Corner common to Sec. 24 T26N, R6W & Sec. 19, T26N, R5W – No GLO evidence was found. Calculated single proportional position for corner and find 2 monuments as follows from calculated position: Point 'A' – S89°29'E 18.87' to Fd. 5/8" CIR per H. Fluharty and Point 'B' – S14°13'E 2.50' to fd. ½" rebar per Farrier notes and witnesses. Point 'A' was the result of a survey blunder and is rejected. Point 'B' doesn't fit the calculated position within acceptable limits and is rejected also. Thus set 4" DNR Alum. Cap on 1" x 3' long galv. Iron pipe by single proportion to GLO between corners "M7 – A7" & "M9 – A9" per standard BLM procedure. Measured grid distances North and South of 2627.28' vs. 2640' – GLO & 2627.37' – Farrier. DNR Mon. accepted as a careful and faithful reestablishment of the position of the original corner.

C. Description of monument for corner and accessories established to perpetuate locating the position of the corner:

M8 – A8 – Stamped 4" DNR Alum. Cap on 1" x 36" Galv. iron pipe
 N22°E 11.56' to set N & T at old nail in W. side 10" Cherry (#8)
 S2°W 57.11' to set N & T at old nail in E. side 10" Cherry (#6)
 S14°13'E 2.50' to Fd. ½" Rebar – Point 'B'
 S89° 29'E 18.87' to 5/8" CIR #18223 – Point 'A'
 S17°W 151.43' to set N & T in W. side 8" R. Pine scribed 'XBT'
 S26°E 175.57' to set N & T in W. side 10" R. Pine scribed 'XBT'
 North 1' to set Blue Carsonite Post



Signed by: Craig W. McVean
 Surveyor's Michigan License No.: 39088

Date: 11/23/2009