

MICHIGAN
DEPARTMENT OF CONSERVATION
FORESTRY DIVISION

LAND CORNER RECORD

T. 26 N.R. 7 W.

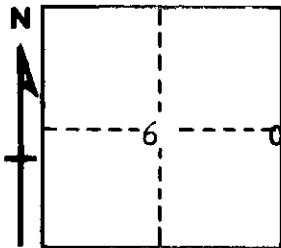
Kalkaska COUNTY

DESCRIPTION OF CORNER 1/4 corner common to Sections 5 - 6

CORNER MONUMENT Drove 1" x 24" pipe below surface

DATE MONUMENT PLACED AND WITNESSED May 1, 1963

WITNESSES TO CORNER.....



CIRCLE CORNER REGISTERED

20" H. Maple N 89 W 54.2'

AND

DESCRIPTION IN DETAIL AS TO HOW CORNER WAS LOCATED AND IDENTIFIED OR RESTORED.

This corner was set while making a subdivision of Section 6. Restored corner from remains of Merrill's 1904 NBTs which were large pine stumps. Falls in line with old fences east and west about in center of old town road N - S. Corner was set to control other surveys in area.

SURVEYOR'S SEAL

SIGNED *Kenneth J. Osting* DATE May 27, 1963
REGISTERED LAND SURVEYOR #10668