

MICHIGAN
DEPARTMENT OF CONSERVATION
FORESTRY DIVISION

LAND CORNER RECORD

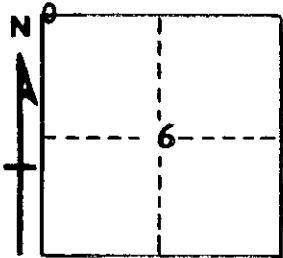
T. 26 N.R. 7 W. T. 27 NR. 7W
T. 26 N.R. 8 W. T. 27 NR. 8W
Kalkaska COUNTY

DESCRIPTION OF CORNER Section corner common to Sections 1 - 6 - 31 - 36

CORNER MONUMENT Left 1 1/4" pipe in place in road

DATE MONUMENT PLACED AND WITNESSED May 1, 1963

WITNESSES TO CORNER.....



CIRCLE CORNER REGISTERED

20" H. Maple N 20 W 25.0'

Only thing near worth marking

AND

DESCRIPTION IN DETAIL AS TO HOW CORNER WAS LOCATED AND IDENTIFIED OR RESTORED.

This corner was found while making a survey of Section 6. Found 1 1/4" pipe in center of E - W road, in line with old road grade north. Nothing left for U. S. BTs. Best available evidence.

SURVEYOR'S SEAL

SIGNED Kenneth J. Osting DATE May 1, 1963
REGISTERED LAND SURVEYOR #10068