

**LAND CORNER RECORDATION CERTIFICATE**  
**Filing Requirement of Act 74, Mich. P.A. 1970**

For corners in

KALKASKA Located In: Corner Code #  
 (County)  
 1998 REMONUMENTATION  
 1. Public Land Survey T.26N R.8W H-5  
 T. R.  
 T. R.  
 T. R.  
 2. Property Controlling S. T. R.  
 in Section S. T. R.  
 3. Miscellaneous S. T. R.  
 Property in Sec. S. T. R.

**SURVEY &  
 REMONUMENTATION**

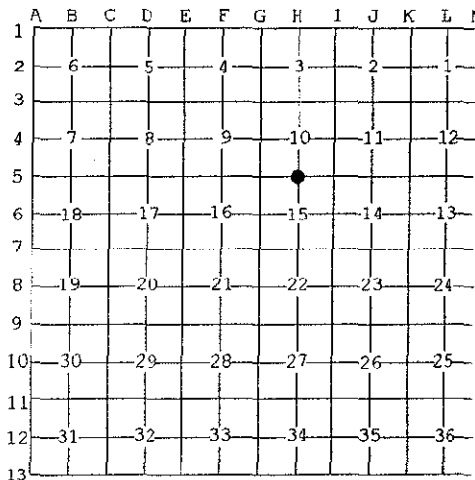
**FEB 22 1999**

**SECTION**

Register of Deeds Stamp & File Number

4. Lot No. \_\_\_\_\_, Recorded Plat \_\_\_\_\_  
 5. Private Claims \_\_\_\_\_

I, EUGENE FARRIER, in a field survey on November 4, 1998 do hereby state that under requirements of P.A. 74, Michigan P.A. of 1970, the corner points mentioned in lines 1 and 2 above were in conformance with regulations and rules therefore as required in the current manual of survey instructions of the United States Department of the Interior, Bureau of Land Management or by a decree of a Court of Law and /or that the corner points mentioned in lines 3, 4 and 5 above were in conformance with the rules of the Michigan Board of Land Surveyors or by a Decree of a Court of Law; established, re-established, monumented, recovered, found as expressed below:



**NOTE: Not more than 2 corners, all in the same town and range, may be recorded on this certificate.**

**A. Description of original monument and accessories and/or subsequent restoration:**

H-5: 1/4 Cor. Common to Secs. 10 & 15, T26N-R8W, Boardman Township  
 1852, GLO. Sub. resurvey by V.W. Cankin D.S.; set corner; W. Pine 24", S42°W, 75 Lks. (49.50'); Maple 12", N49°E, 53 Lks. (34.98' stream 6 Lks., C.W., West 21.28 Chs. (1404.5')  
 1908, Sec. Sub. Survey by W.S. Merrill CS. Co. Survey Bk. Pg. 46; shows corner only.  
 1909, 1909, 1911, Sec. Sub. Survey by W.S. Merrill CS., FB # 23, Pg. 129, FB # 23, Pg. 130 & FB # 19, Pg. 77; shows corner only.  
 3-21-78, J. Fletcher, fd. DNR mon., Liber 2, Pg. 172, Cert. of Survey  
 6-6-78, J. Fletcher, fd. DNR mon., Cert. of Survey  
 9-18-78, C. Roser, set DNR mon. w/Cedar post btw. Sec. cors. to E & W & at pro-rated distance to W.S. Merrill survey of S. line, Sec. 10, Bk.#23, Pg. 129, Feb. 1909, LCRC Liber 2, Pg. 122.

**Ratified by Peer Group  
 P.A. 345 - 1990 Kalkaska County**

**Chairman** Eugene Farrier  
**Date** 2-2-99

**B. Description of corner evidence found and/or method applied in restoring or reestablishing corner:**

H-5: 1/4 Cor. Common to Secs. 10 & 15, T26N-R8W, Boardman Township  
 Fd. & accepted DNR mon. , w/ Cedar post 8' NW of West edge of small pond, left in place, as recorded in LCRC, Liber 2, Pg. 122  
 N87°W, 37.44' - 18" R. Pine  
 N10°E, 55.80' - 14" Maple  
 No G.L.O. witnesses were found  
 Kalkaska County Peer Group accepted the above monument as a careful and faithful reestablishment of the position of the original corner.

**C. Description of monument for corner and accessories established to perpetuate locating the position of the corner:**

H-5: 1/4 Cor. Common to Secs. 10 & 15, T26N-R8W, Boardman Township  
 Fd. & accepted DNR mon. , w/ Cedar post 8' NW of West edge of small pond, left in place  
 N87°W, 37.44' - 18" R. Pine, set nail & washer  
 N40°W, 12.12' - 16" W. Pine, set nail & washer  
 N10°E, 55.80' - 14" Maple, set nail & washer  
 N33°E - 12" Maple in clump, set nail & washer

Signed by Eugene Farrier  
 Michigan License No. 24594

Date 2-8-99

