

MICHIGAN
DEPARTMENT OF CONSERVATION
FORESTRY DIVISION

LAND CORNER RECORD

T. 26 N.R. 8 W

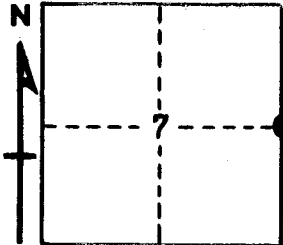
Kalkaska COUNTY

DESCRIPTION OF CORNER 1/4 corner common to sections 7-8

CORNER MONUMENT Set Cons. Dept. Mon.

DATE MONUMENT PLACED AND WITNESSED 8/28/67

WITNESSES TO CORNER.....



CIRCLE CORNER REGISTERED

16" R. Pine N 2 W 24.4'

4" W. Pine S 17 W 21.6'

AND

DESCRIPTION IN DETAIL AS TO HOW CORNER WAS LOCATED AND IDENTIFIED OR RESTORED.

This corner was restored during survey of Section 17. Found what we believe was stake bottom at location prescribed by stumps of both USBTs.

This point fits stream crossing south and appears to conform to pattern of survey for this area.

SURVEYOR'S SEAL

SIGNED *Kenneth J. Ostling* DATE 9/20/67
REGISTERED LAND SURVEYOR #10068