

MICHIGAN
DEPARTMENT OF CONSERVATION
FORESTRY DIVISION

LAND CORNER RECORD

T. 26 N. R. 8 W.

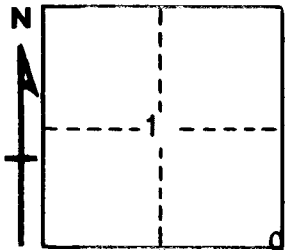
Kalkaska COUNTY

DESCRIPTION OF CORNER Section corner common to Sections 1 and 12 on east boundary of township

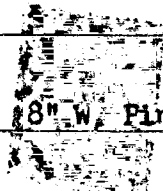
CORNER MONUMENT Set 1" pipe with 4" aluminum cap below surface

DATE MONUMENT PLACED AND WITNESSED May 1, 1963

WITNESSES TO CORNER.....



CIRCLE CORNER REGISTERED



8" W. Pine N 43 W 53.3'

8" W. Pine S 47 W 87.6'

AND

DESCRIPTION IN DETAIL AS TO HOW CORNER WAS LOCATED AND IDENTIFIED OR RESTORED.

This corner was set while making a survey in Section 6. Set corner record measure north of closing corner common to Sections 6 - 7, T 26 N, R 7 W which was found to be a 3/4" pipe in line with road west and north. This point is properly located relative to Merrill's probable NBT of 1904 which is in place, but rotted. Falls in line with center of road west but in cut section so previous corner was removed. Very probably a restoration of 1904 corner by Merrill.

SURVEYOR'S SEAL

SIGNED Kenneth J. Petting
REGISTERED LAND SURVEYOR #10068

DATE May 27, 1963