

MICHIGAN  
DEPARTMENT OF CONSERVATION  
FORESTRY DIVISION

# LAND CORNER RECORD

T. 27 N.R. 8 W  
T. 28 N.R. 8 W

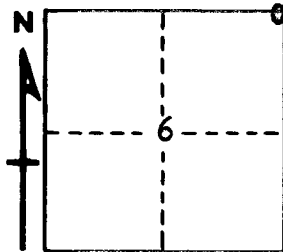
Kalkaska COUNTY

DESCRIPTION OF CORNER Sec. corner common to Sections 5-6-31-32

CORNER MONUMENT Set 1" pipe with 4" aluminum cap

DATE MONUMENT PLACED AND WITNESSED 4-19-67

WITNESSES TO CORNER.....



CIRCLE CORNER REGISTERED

12" H. Maple N 11 E 68.1'

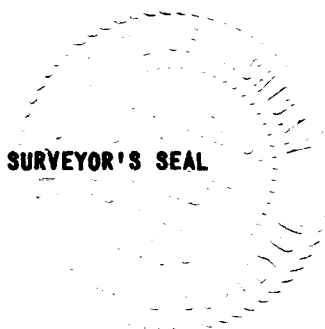
7" Beech clump N 80 E 81.3'

AND

DESCRIPTION IN DETAIL AS TO HOW CORNER WAS LOCATED AND IDENTIFIED OR RESTORED.

This corner was restored during a retracement of the North half of this township. Restored this corner in line with old fence line North and East. This point falls at proportionate measurement between section corner east and 1/4 corner West, and conforms by proportionate measurement to 1/4 corner between 31-32 and section corner 5-6-7-8.

Could find no previous monument, but found what possibly could be a stake point under considerable fill at position for corner.



SIGNED \_\_\_\_\_ DATE 4-25-67  
REGISTERED LAND SURVEYOR #10068