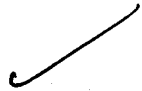


MICHIGAN
DEPARTMENT OF CONSERVATION
FORESTRY DIVISION



LAND CORNER RECORD

T. 27 N.R. 8 W

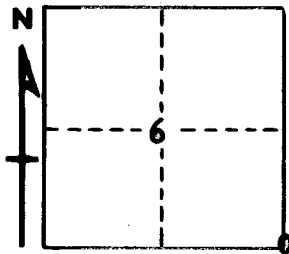
Kalkaska COUNTY

DESCRIPTION OF CORNER Sec. corner common to Sections 5-6-7-8

CORNER MONUMENT Set 1" pipe with 4" aluminum cap below surface

DATE MONUMENT PLACED AND WITNESSED _____

WITNESSES TO CORNER..... _____



CIRCLE CORNER REGISTERED

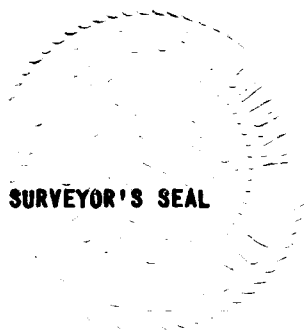
10" H. Maple N 32 W 27.6°

9" H. Maple S 64 W 27.4°

AND _____

DESCRIPTION IN DETAIL AS TO HOW CORNER WAS LOCATED AND IDENTIFIED OR RESTORED.

This corner was restored during a survey of this area. Set corner at proportionate measurement North-South, and in line with old established fence and occupation line South. Found large stone at corner which may have been set to mark the corner in previous survey. Checks acceptably for E-W proportion.



SURVEYOR'S SEAL

SIGNED _____ DATE 4-25-67

REGISTERED LAND SURVEYOR #10068