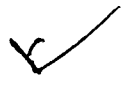


MICHIGAN
DEPARTMENT OF CONSERVATION
FORESTRY DIVISION



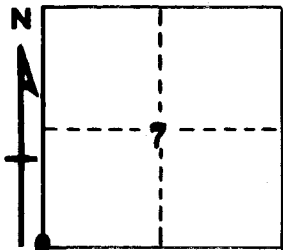
LAND CORNER RECORD

T. 27 N.R. 8 W
T. 27 N.R. 9 W

Kalkaska
Grand Traverse COUNTY

DESCRIPTION OF CORNER Sec. corner common to Sections 7-18-12-13
CORNER MONUMENT Set 1" pipe with 4" aluminum cap below surface
DATE MONUMENT PLACED AND WITNESSED 4-13-67

WITNESSES TO CORNER.....



CIRCLE CORNER REGISTERED

18" W. Pine N 45 W 37.7'
7" W. Pine N 53 E 23.5'

AND

DESCRIPTION IN DETAIL AS TO HOW CORNER WAS LOCATED AND IDENTIFIED OR RESTORED.

This corner was restored during a survey of T27N, R8W. Reestablished corner set by Schaaf in 1934, from his witness pits, and the stump of the probable U.S.B.T. Falls in with fireline N-S-E. This position makes the West line of Section 18 somewhat short of record and the S 1/2 of 7 comparatively long, but this position appears to be supported by one possible U.S.B.T., and the record of surveys in Section 12.

SURVEYOR'S SEAL

SIGNED _____ DATE 4-25-67
REGISTERED LAND SURVEYOR #10068