

MICHIGAN
DEPARTMENT OF CONSERVATION
FORESTRY DIVISION

LAND CORNER RECORD

T. 27 N.R. 8 W
T. 27 N.R. 9 W

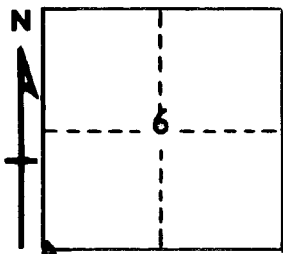
Kalkaska
Grand Traverse COUNTY

DESCRIPTION OF CORNER Sec. corner common to Sections 6-7-1-12

CORNER MONUMENT Set 1" pipe with 4" aluminum cap

DATE MONUMENT PLACED AND WITNESSED 4-12-67

WITNESSES TO CORNER.....



CIRCLE CORNER REGISTERED

12" H. Maple	N 15 E	15.7'
8" H. Maple	S 55 W	10.6'
10" H. Maple	S 70 E	19.9'

AND

DESCRIPTION IN DETAIL AS TO HOW CORNER WAS LOCATED AND IDENTIFIED OR RESTORED.

This corner was found while making a retracement in this township. Found corner as identified and perpetuated by E. P. Waterman in 1909 during a survey of Section 1. Found stone at corner, marked as stated in the record, and possible NW witness by Waterman, and Ash sprouts from remains of SE witness in place. Also checks measurement to town corner North, as recorded in County records. Found remains of old stake bottom at S. edge of stone corner.



SIGNED _____ DATE 4-25-67

REGISTERED LAND SURVEYOR

#10068