

MICHIGAN  
DEPARTMENT OF CONSERVATION  
FORESTRY DIVISION



# LAND CORNER RECORD

T. 27 N.R. 8 W  
T. 27 N.R. 9 W

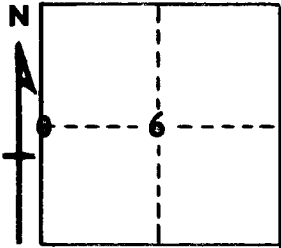
Kalkaska  
Grand Traverse COUNTY

DESCRIPTION OF CORNER 1/4 corner common to Sections 1 - 6

CORNER MONUMENT Set 1" pipe with 4" aluminum cap

DATE MONUMENT PLACED AND WITNESSED 4-12-67

WITNESSES TO CORNER.....



CIRCLE CORNER REGISTERED

8" H. Maple S 52 W 30.9'

7" Maple Clump N 63 E 38.0'

AND

DESCRIPTION IN DETAIL AS TO HOW CORNER WAS LOCATED AND IDENTIFIED OR RESTORED.

This corner was restored during a retracement of part of this township. Found evidence of old fence post set to a depth of 3', which is recorded as having been set by E. P. Waterman in 1909 at the position of the U.S. 1/4 corner. This point conforms nearly exactly with the Waterman record for line and distance between corners. A 4" concrete monument is 1.7' East of true corner.

SURVEYOR'S SEAL

SIGNED \_\_\_\_\_ DATE 4-25-67

REGISTERED LAND SURVEYOR #10068