

MICHIGAN
DEPARTMENT OF CONSERVATION
FORESTRY DIVISION



LAND CORNER RECORD

T. 27 N.R. 8 W

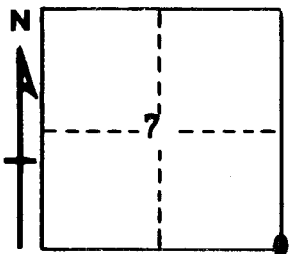
Kalkaska COUNTY

DESCRIPTION OF CORNER Sec. corner common to Sections 7-8-17-18

CORNER MONUMENT Set 1" pipe with 4" aluminum cap

DATE MONUMENT PLACED AND WITNESSED 4-7-67

WITNESSES TO CORNER.....



CIRCLE CORNER REGISTERED

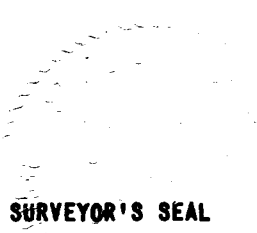
5" W. Pine N 33 W 46.3'

7" H. Maple S 23 W 31.2'

AND

DESCRIPTION IN DETAIL AS TO HOW CORNER WAS LOCATED AND IDENTIFIED OR RESTORED.

This corner was found while making a retracement in this township. Found 1½" pipe in center of fireline west, at old N-S fence line. Previously established by Marcus Schaaf, R.L.S. in 1934 survey.



SURVEYOR'S SEAL

SIGNED _____ DATE 4-24-67
REGISTERED LAND SURVEYOR #10068